

ARI (#0171): Total of 40 orbits. $\lambda_o = 77^\circ$, $\lambda_g - \lambda_o = 331.6^\circ$, $\beta_g = 7.3^\circ$, $\Delta r = 3^\circ$, $\Delta \lambda_o = 10^\circ$.

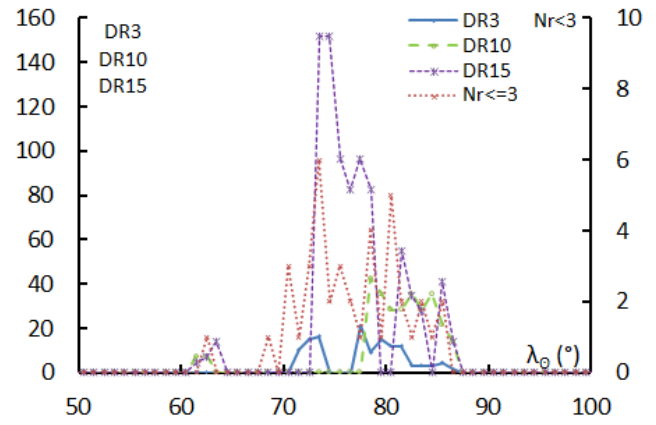
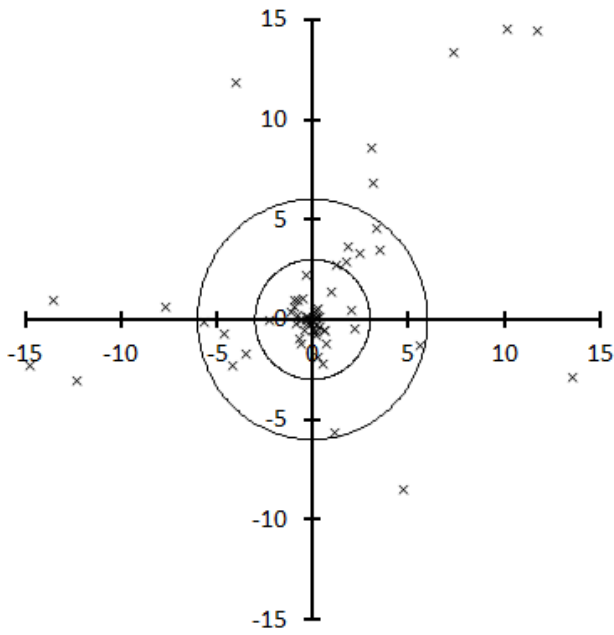


Table 1 – Number per year.

Year	N	Year	N
2007	2	2013	2
2008	2	2014	3
2009	2	2015	5
2010	5	2016	7
2011	1	2017	7
2012	1	2018	3

Table 2 – Activity profiles.

	λ_o	Max
Nr<=3	73.5	6
DR3	77.5	21.0
DR10	78.5	42.5
DR15	73.5	151.6

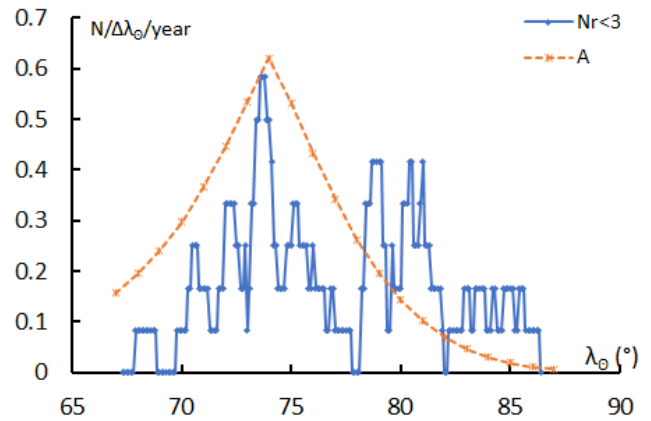


Table 3 – Evolution of the orbital parameters during the activity period.

λ_o	$\lambda_g - \lambda_o$	β_g	α_g	δ_g	v_g	e	q	i	ω	Ω	λ_{Π}	β_{Π}	a
67	334.3	7.7	36.3	22.5	39.4	0.963	0.108	23.0	34.7	67.0	99.5	12.8	2.90
68	334.0	7.6	37.0	22.7	39.6	0.964	0.104	23.4	34.0	68.0	99.8	12.8	2.88
69	333.7	7.6	37.8	22.9	39.8	0.965	0.100	23.8	33.4	69.0	100.1	12.8	2.86
70	333.4	7.6	38.5	23.1	39.9	0.966	0.097	24.2	32.7	70.0	100.4	12.8	2.83
71	333.1	7.5	39.3	23.2	40.1	0.967	0.093	24.6	32.1	71.0	100.7	12.8	2.81
72	332.9	7.5	40.0	23.4	40.2	0.968	0.090	25.1	31.4	72.0	101.0	12.8	2.79
73	332.6	7.4	40.8	23.6	40.4	0.969	0.086	25.6	30.8	73.0	101.3	12.8	2.77
73.1	332.5	7.4	40.8	23.6	40.4	0.969	0.086	25.6	30.7	73.1	101.3	12.8	2.76
73.2	332.5	7.4	40.9	23.6	40.4	0.969	0.086	25.7	30.7	73.2	101.3	12.8	2.76
73.3	332.5	7.4	41.0	23.7	40.4	0.969	0.085	25.7	30.6	73.3	101.3	12.8	2.76
73.4	332.5	7.4	41.1	23.7	40.4	0.969	0.085	25.8	30.5	73.4	101.4	12.8	2.76
73.5	332.4	7.4	41.1	23.7	40.4	0.969	0.085	25.8	30.5	73.5	101.4	12.8	2.75
73.6	332.4	7.4	41.2	23.7	40.5	0.969	0.084	25.9	30.4	73.6	101.4	12.7	2.75
73.7	332.4	7.4	41.3	23.7	40.5	0.969	0.084	25.9	30.3	73.7	101.5	12.7	2.75
73.8	332.3	7.4	41.4	23.7	40.5	0.970	0.084	26.0	30.3	73.8	101.5	12.7	2.75
73.9	332.3	7.4	41.4	23.8	40.5	0.970	0.083	26.0	30.2	73.9	101.5	12.7	2.75
74	332.3	7.4	41.5	23.8	40.5	0.970	0.083	26.1	30.1	74.0	101.5	12.7	2.74
75	332.0	7.4	42.3	23.9	40.7	0.971	0.080	26.6	29.5	75.0	101.8	12.7	2.72
76	331.7	7.3	43.0	24.1	40.8	0.972	0.077	27.1	28.9	76.0	102.1	12.7	2.70
77	331.4	7.3	43.8	24.3	41.0	0.973	0.074	27.6	28.2	77.0	102.4	12.7	2.68
78	331.1	7.2	44.5	24.4	41.1	0.973	0.071	28.2	27.6	78.0	102.7	12.6	2.66

Table 3 – Continued, evolution of the orbital parameters during the activity period.

λ_{θ}	$\lambda_g - \lambda_{\theta}$	β_g	α_g	δ_g	v_g	e	q	i	ω	Ω	λ_{Π}	β_{Π}	a
79	330.9	7.2	45.3	24.6	41.3	0.974	0.068	28.8	27.0	79.0	103.0	12.6	2.64
80	330.6	7.1	46.1	24.8	41.4	0.975	0.065	29.4	26.3	80.0	103.3	12.6	2.62
81	330.3	7.1	46.8	24.9	41.6	0.976	0.062	30.1	25.7	81.0	103.6	12.6	2.60
82	330.0	7.1	47.6	25.1	41.8	0.977	0.059	30.8	25.1	82.0	103.9	12.5	2.58
83	329.7	7.0	48.4	25.2	41.9	0.978	0.056	31.5	24.5	83.0	104.2	12.5	2.56
84	329.4	7.0	49.1	25.4	42.1	0.979	0.054	32.2	23.9	84.0	104.5	12.5	2.54
85	329.1	6.9	49.9	25.5	42.2	0.980	0.051	33.0	23.3	85.0	104.8	12.4	2.52
86	328.9	6.9	50.7	25.6	42.4	0.980	0.049	33.9	22.6	86.0	105.1	12.4	2.50
87	328.6	6.8	51.4	25.8	42.5	0.981	0.046	34.7	22.1	87.0	105.4	12.4	2.48