

AVB (#0021): Total of **81** orbits. $\lambda_o = 27^\circ$, $\lambda_g - \lambda_o = 168.7^\circ$, $\beta_g = 11.8^\circ$, $\Delta r = 3^\circ$, $\Delta \lambda_o = 10^\circ$. This is a different activity than the ‘alpha Virginids’ of the Super Schmidt observations.

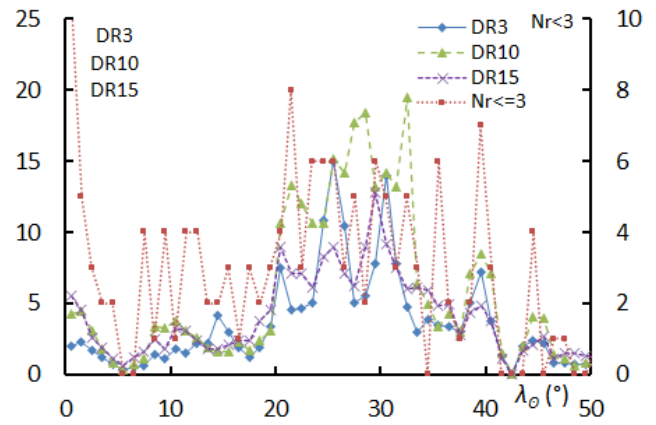
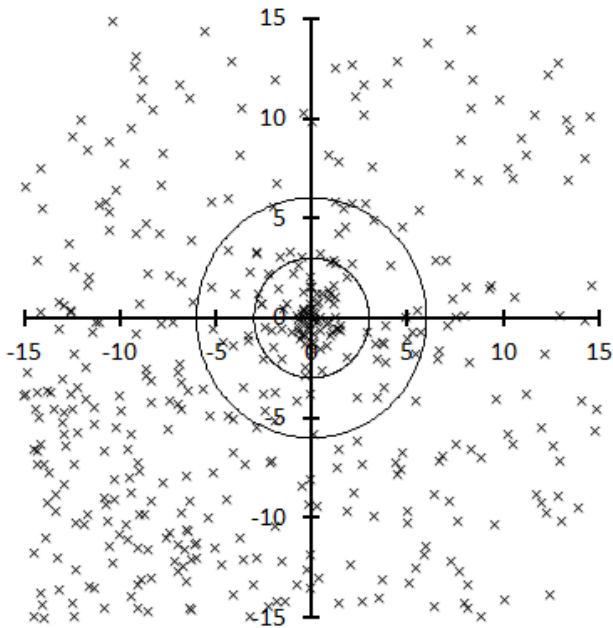


Table 1 – Number per year.

Year	N	Year	N
2007	1	2013	7
2008	5	2014	11
2009	9	2015	5
2010	2	2016	6
2011	9	2017	13
2012	3	2018	10

Table 2 – Activity profiles.

	λ_o	Max
Nr<=3	21.5	8
DR3	25.5	15.0
DR10	32.5	19.5
DR15	29.5	12.8

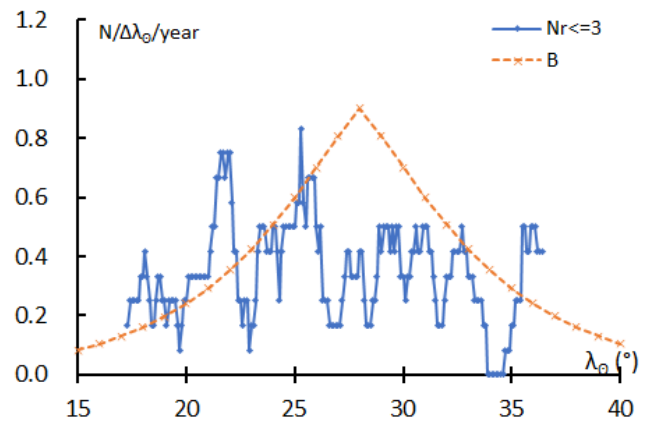


Table 3 – Evolution of the orbital parameters during the activity period.

λ_o	$\lambda_g - \lambda_o$	β_g	α_g	δ_g	v_g	e	q	i	ω	Ω	λ_{π}	β_{π}	a
15	176.2	9.6	194.1	4.4	21.2	0.729	0.642	6.5	261.4	15.0	276.3	-6.4	2.37
16	175.8	9.8	194.6	4.4	21.1	0.728	0.649	6.5	260.5	16.0	276.4	-6.4	2.39
17	175.3	10.0	195.2	4.3	20.9	0.728	0.655	6.6	259.6	17.0	276.6	-6.5	2.41
18	174.9	10.2	195.8	4.3	20.8	0.727	0.662	6.6	258.8	18.0	276.7	-6.5	2.42
19	174.4	10.4	196.4	4.3	20.6	0.727	0.668	6.7	257.9	19.0	276.8	-6.5	2.44
20	174.0	10.5	196.9	4.2	20.5	0.726	0.675	6.7	257.1	20.0	277.0	-6.5	2.46
21	173.5	10.7	197.5	4.2	20.3	0.725	0.681	6.7	256.2	21.0	277.1	-6.6	2.48
22	173.1	10.9	198.1	4.1	20.2	0.725	0.687	6.8	255.4	22.0	277.3	-6.6	2.50
23	172.6	11.1	198.6	4.1	20.0	0.724	0.694	6.8	254.6	23.0	277.5	-6.6	2.51
24	172.1	11.3	199.2	4.1	19.9	0.724	0.700	6.9	253.8	24.0	277.6	-6.6	2.53
25	171.7	11.5	199.8	4.0	19.7	0.723	0.706	6.9	252.9	25.0	277.8	-6.6	2.55
26	171.2	11.7	200.3	4.0	19.6	0.722	0.712	6.9	252.1	26.0	278.0	-6.6	2.56
27	170.8	11.8	200.9	4.0	19.4	0.722	0.718	6.9	251.3	27.0	278.2	-6.6	2.58
28	170.3	12.0	201.4	3.9	19.3	0.721	0.724	7.0	250.5	28.0	278.4	-6.6	2.59
29	169.9	12.2	202.0	3.9	19.2	0.720	0.729	7.0	249.7	29.0	278.6	-6.6	2.61
30	169.4	12.4	202.6	3.9	19.0	0.719	0.735	7.0	249.0	30.0	278.8	-6.6	2.62
31	168.9	12.6	203.1	3.8	18.9	0.718	0.741	7.0	248.2	31.0	279.0	-6.5	2.63
32	168.5	12.7	203.7	3.8	18.7	0.718	0.746	7.1	247.4	32.0	279.3	-6.5	2.64
33	168.0	12.9	204.2	3.8	18.6	0.717	0.752	7.1	246.7	33.0	279.5	-6.5	2.65
34	167.5	13.1	204.8	3.8	18.4	0.716	0.757	7.1	245.9	34.0	279.7	-6.5	2.66

Table 3 – Continued, evolution of the orbital parameters during the activity period.

λ_o	$\lambda_g - \lambda_o$	β_g	α_g	δ_g	v_g	e	q	i	ω	Ω	λ_{Π}	β_{Π}	a
35	167.1	13.3	205.3	3.7	18.3	0.715	0.763	7.1	245.2	35.0	280.0	-6.5	2.67
36	166.6	13.4	205.9	3.7	18.1	0.714	0.768	7.1	244.4	36.0	280.3	-6.4	2.68
37	166.2	13.6	206.4	3.7	18.0	0.713	0.773	7.1	243.7	37.0	280.5	-6.4	2.69
38	165.7	13.8	207.0	3.6	17.8	0.711	0.779	7.2	243.0	38.0	280.8	-6.4	2.70
39	165.2	14.0	207.5	3.6	17.7	0.710	0.784	7.2	242.2	39.0	281.1	-6.3	2.70
40	164.8	14.1	208.1	3.6	17.6	0.709	0.789	7.2	241.5	40.0	281.3	-6.3	2.71