

DRV (#0502): Total of **195** orbits. $\lambda_o = 256^\circ$, $\lambda_g - \lambda_o = 285.6^\circ$, $\beta_g = 14.9^\circ$, $\Delta r = 3^\circ$, $\Delta \lambda_o = 10^\circ$.

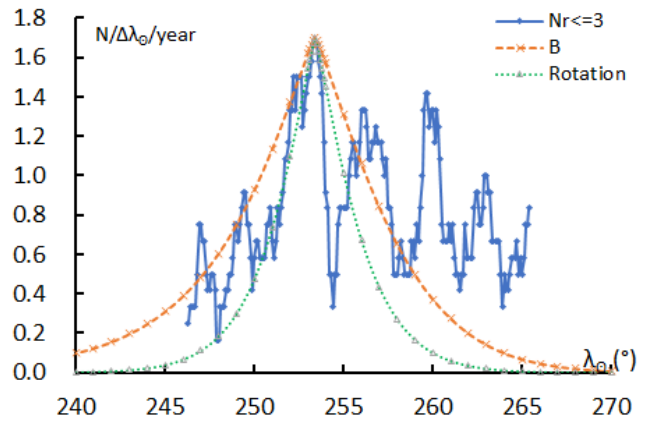
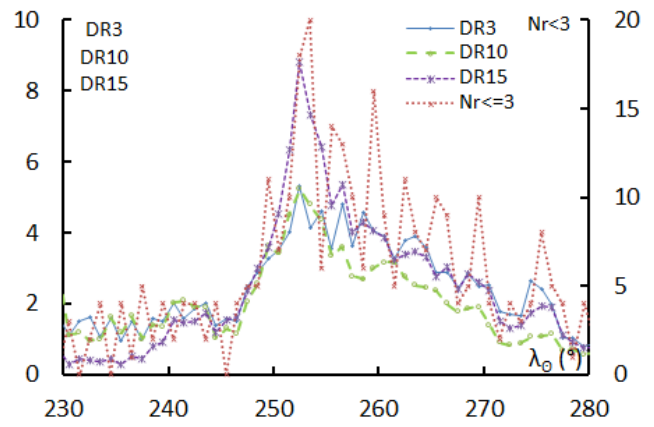
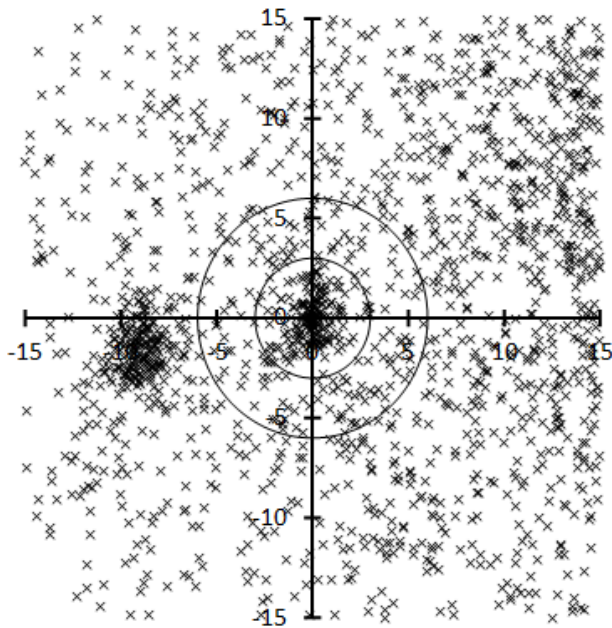


Table 1 – Number per year.

Year	N	Year	N
2007	15	2013	22
2008	20	2014	7
2009	11	2015	17
2010	22	2016	17
2011	11	2017	21
2012	18	2018	14

Table 2 – Activity profiles.

	λ_o	Max
Nr<=3	253.5	20
DR3	252.5	5.3
DR10	252.5	5.2
DR15	252.5	8.8

Table 3 – Evolution of the orbital parameters during the activity period.

λ_o	$\lambda_g - \lambda_o$	β_g	α_g	δ_g	v_g	e	q	i	ω	Ω	λ_{Π}	β_{Π}	a
245	287.4	11.8	177.8	13.9	68.6	0.953	0.759	157.5	121.8	245.0	121.1	19.0	15.99
246	287.3	12.1	178.7	13.7	68.6	0.950	0.762	157.0	122.1	246.0	121.7	19.3	15.09
247	287.2	12.3	179.7	13.6	68.5	0.947	0.764	156.6	122.5	247.0	122.2	19.6	14.31
248	287.1	12.6	180.6	13.5	68.5	0.944	0.767	156.1	122.8	248.0	122.8	19.9	13.64
249	287.0	12.9	181.5	13.4	68.4	0.941	0.770	155.6	123.2	249.0	123.3	20.2	13.04
250	286.8	13.1	182.4	13.3	68.4	0.938	0.772	155.2	123.5	250.0	123.8	20.5	12.52
251	286.7	13.4	183.3	13.2	68.3	0.936	0.775	154.7	123.9	251.0	124.4	20.8	12.05
252	286.6	13.6	184.2	13.0	68.3	0.933	0.778	154.3	124.3	252.0	124.9	21.0	11.64
253	286.5	13.9	185.2	12.9	68.2	0.931	0.781	153.8	124.7	253.0	125.4	21.3	11.26
253.1	286.5	13.9	185.3	12.9	68.2	0.930	0.781	153.8	124.7	253.1	125.4	21.3	11.23
253.2	286.5	13.9	185.3	12.9	68.2	0.930	0.781	153.7	124.7	253.2	125.5	21.3	11.19
253.3	286.5	14.0	185.4	12.9	68.2	0.930	0.781	153.7	124.8	253.3	125.5	21.4	11.16
253.4	286.5	14.0	185.5	12.9	68.2	0.930	0.782	153.6	124.8	253.4	125.6	21.4	11.13
253.5	286.4	14.0	185.6	12.9	68.2	0.930	0.782	153.6	124.9	253.5	125.6	21.4	11.09
253.6	286.4	14.0	185.7	12.9	68.2	0.929	0.782	153.5	124.9	253.6	125.7	21.4	11.06
253.7	286.4	14.1	185.8	12.8	68.2	0.929	0.783	153.5	124.9	253.7	125.7	21.5	11.03
253.8	286.4	14.1	185.9	12.8	68.2	0.929	0.783	153.4	125.0	253.8	125.8	21.5	10.99
253.9	286.4	14.1	186.0	12.8	68.2	0.929	0.783	153.4	125.0	253.9	125.8	21.5	10.96
254	286.4	14.1	186.1	12.8	68.2	0.928	0.783	153.3	125.1	254.0	125.9	21.5	10.93
255	286.3	14.4	187.0	12.7	68.1	0.926	0.786	152.9	125.4	255.0	126.4	21.8	10.63
256	286.2	14.7	187.9	12.6	68.1	0.924	0.789	152.4	125.8	256.0	126.8	22.0	10.36

Table 3 – Continued, evolution of the orbital parameters during the activity period.

λ_{θ}	$\lambda_g - \lambda_{\theta}$	β_g	α_g	δ_g	v_g	e	q	i	ω	Ω	λ_{Π}	β_{Π}	a
257	286.0	14.9	188.8	12.5	68.0	0.922	0.792	152.0	126.2	257.0	127.3	22.3	10.11
258	285.9	15.2	189.7	12.4	67.9	0.920	0.795	151.5	126.6	258.0	127.8	22.5	9.89
259	285.8	15.4	190.6	12.2	67.9	0.918	0.797	151.1	127.1	259.0	128.2	22.7	9.69
260	285.7	15.7	191.5	12.1	67.8	0.916	0.800	150.6	127.5	260.0	128.7	22.9	9.51
261	285.6	16.0	192.4	12.0	67.8	0.914	0.803	150.2	127.9	261.0	129.1	23.1	9.35
262	285.5	16.2	193.3	11.9	67.7	0.912	0.806	149.8	128.3	262.0	129.5	23.3	9.20
263	285.3	16.5	194.2	11.8	67.7	0.911	0.809	149.3	128.8	263.0	130.0	23.4	9.07
264	285.2	16.7	195.1	11.7	67.6	0.909	0.812	148.9	129.2	264.0	130.4	23.6	8.95
265	285.1	17.0	196.0	11.6	67.6	0.908	0.815	148.4	129.6	265.0	130.8	23.8	8.84
266	285.0	17.2	196.9	11.5	67.5	0.907	0.817	148.0	130.1	266.0	131.2	23.9	8.74
267	284.9	17.5	197.8	11.4	67.5	0.905	0.820	147.6	130.5	267.0	131.6	24.0	8.66
268	284.8	17.8	198.7	11.3	67.4	0.904	0.823	147.1	131.0	268.0	132.0	24.2	8.58
269	284.6	18.0	199.6	11.2	67.4	0.903	0.826	146.7	131.5	269.0	132.4	24.3	8.52
270	284.5	18.3	200.5	11.1	67.3	0.902	0.829	146.3	131.9	270.0	132.8	24.4	8.47
271	284.4	18.5	201.3	11.0	67.3	0.901	0.832	145.8	132.4	271.0	133.2	24.5	8.42
272	284.3	18.8	202.2	10.9	67.2	0.900	0.835	145.4	132.9	272.0	133.6	24.6	8.38
273	284.2	19.0	203.1	10.9	67.1	0.900	0.838	145.0	133.4	273.0	133.9	24.7	8.36
274	284.0	19.3	204.0	10.8	67.1	0.899	0.840	144.6	133.8	274.0	134.3	24.7	8.34
275	283.9	19.6	204.9	10.7	67.0	0.899	0.843	144.1	134.3	275.0	134.7	24.8	8.32