

DSX (#0221): Total of 23 orbits. $\lambda_o = 189.2^\circ$, $\lambda_g - \lambda_o = 329.8^\circ$, $\beta_g = -11.8^\circ$, $\Delta r = 6^\circ$, $\Delta \lambda_o = 10^\circ$.

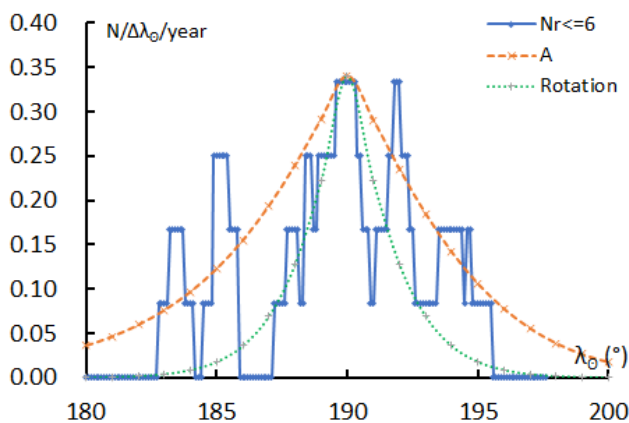
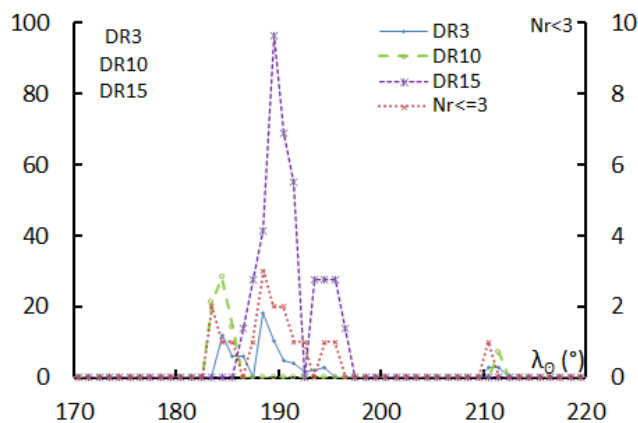
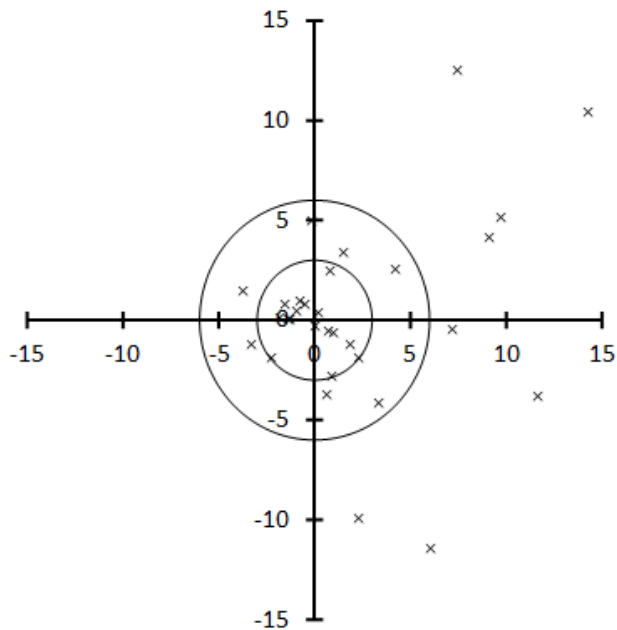


Table 1 – Number per year.

Year	N	Year	N
2007	0	2013	1
2008	5	2014	1
2009	1	2015	3
2010	4	2016	0
2011	3	2017	1
2012	2	2018	2

Table 2 – Activity profiles.

	λ_o	Max
Nr<=3	188.5	3
DR3	188.5	18.0
DR10	184.5	28.4
DR15	189.5	96.4

Table 3 – Evolution of the orbital parameters during the activity period.

λ_o	$\lambda_g - \lambda_o$	β_g	α_g	δ_g	v_g	e	q	i	ω	Ω	λ_{π}	β_{π}	a
180	329.4	-12.9	147.0	-0.4	33.5	0.881	0.136	29.8	212.2	0.0	208.7	-15.4	1.14
181	329.4	-12.8	148.0	-0.7	33.4	0.879	0.137	29.4	212.3	1.0	209.8	-15.2	1.13
182	329.4	-12.7	149.0	-0.9	33.2	0.878	0.138	29.0	212.3	2.0	210.9	-15.0	1.13
183	329.5	-12.6	150.0	-1.2	33.1	0.876	0.139	28.5	212.3	3.0	212.1	-14.8	1.12
184	329.5	-12.5	150.9	-1.5	32.9	0.875	0.140	28.1	212.3	4.0	213.2	-14.6	1.11
185	329.6	-12.5	151.9	-1.8	32.8	0.873	0.140	27.7	212.4	5.0	214.3	-14.4	1.11
186	329.6	-12.4	152.9	-2.1	32.7	0.872	0.141	27.3	212.4	6.0	215.4	-14.2	1.10
187	329.6	-12.3	153.9	-2.4	32.5	0.870	0.142	26.9	212.4	7.0	216.6	-14.0	1.09
188	329.7	-12.2	154.8	-2.7	32.4	0.868	0.143	26.5	212.5	8.0	217.7	-13.8	1.09
189	329.7	-12.1	155.8	-3.0	32.2	0.867	0.144	26.1	212.5	9.0	218.8	-13.7	1.08
190	329.8	-12.1	156.8	-3.3	32.1	0.865	0.145	25.7	212.6	10.0	219.9	-13.5	1.08
191	329.8	-12.0	157.8	-3.6	31.9	0.863	0.146	25.3	212.6	11.0	221.1	-13.3	1.07
192	329.9	-11.9	158.7	-3.9	31.8	0.862	0.147	24.9	212.7	12.0	222.2	-13.1	1.07
193	329.9	-11.8	159.7	-4.2	31.7	0.860	0.149	24.5	212.7	13.0	223.3	-12.9	1.06
194	329.9	-11.7	160.7	-4.5	31.5	0.858	0.150	24.1	212.8	14.0	224.4	-12.8	1.06
195	330.0	-11.7	161.7	-4.8	31.4	0.856	0.151	23.7	212.8	15.0	225.5	-12.6	1.05
196	330.0	-11.6	162.6	-5.2	31.2	0.855	0.152	23.3	212.9	16.0	226.7	-12.4	1.05
197	330.1	-11.5	163.6	-5.5	31.1	0.853	0.153	23.0	212.9	17.0	227.8	-12.2	1.04
198	330.1	-11.4	164.6	-5.8	30.9	0.851	0.154	22.6	213.0	18.0	228.9	-12.1	1.04
199	330.1	-11.3	165.6	-6.1	30.8	0.849	0.155	22.2	213.0	19.0	230.0	-11.9	1.03
200	330.2	-11.3	166.5	-6.5	30.7	0.847	0.157	21.9	213.1	20.0	231.2	-11.7	1.03