

EHY (#0529): Total of 497 orbits. $\lambda_o = 260.7^\circ$, $\lambda_g - \lambda_o = 237.3^\circ$, $\beta_g = -14.7^\circ$, $\Delta r = 3^\circ$, $\Delta \lambda_o = 15^\circ$.

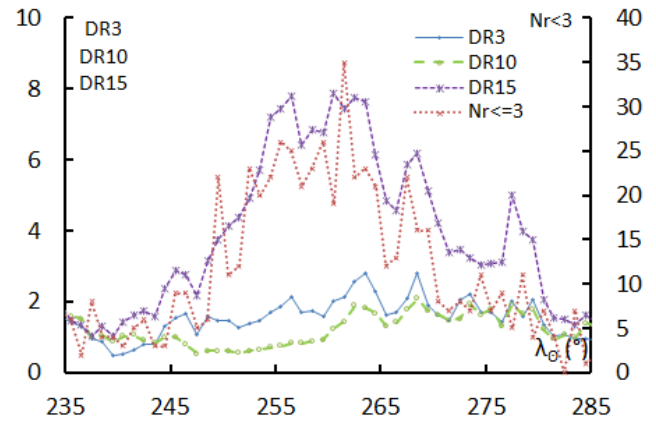
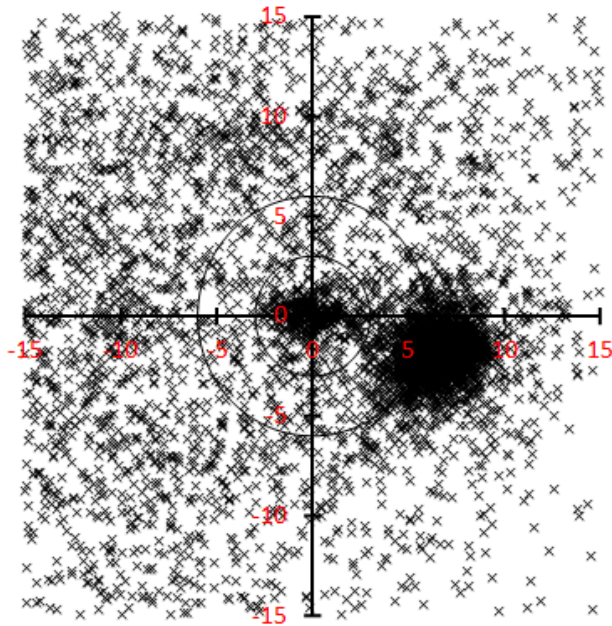


Table 1 – Number per year.

Year	N	Year	N
2007	44	2013	44
2008	32	2014	25
2009	38	2015	35
2010	45	2016	32
2011	46	2017	55
2012	61	2018	40

Table 2 – Activity profiles.

	λ_o	Max
Nr<=3	261.5	35
DR3	268.5	2.8
DR10	268.5	2.1
DR15	260.5	7.9

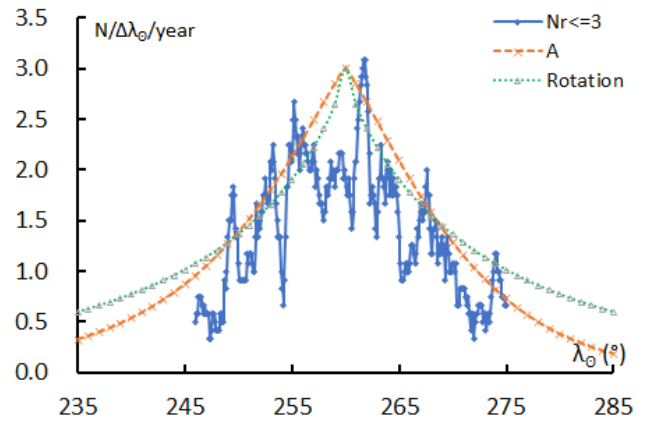


Table 3 – Evolution of the orbital parameters during the activity period.

λ_o	$\lambda_g - \lambda_o$	β_g	α_g	δ_g	v_g	e	q	i	ω	Ω	λ_{Π}	β_{Π}	a
244	239.8	-15.5	122.5	4.2	62.5	0.951	0.425	142.6	99.6	64.0	321.9	36.8	8.67
245	239.6	-15.4	123.3	4.1	62.4	0.951	0.421	142.6	100.1	65.0	322.3	36.7	8.65
246	239.5	-15.4	124.1	4.0	62.4	0.952	0.417	142.6	100.6	66.0	322.7	36.7	8.63
247	239.3	-15.3	124.9	3.8	62.3	0.952	0.413	142.6	101.1	67.0	323.1	36.6	8.61
248	239.2	-15.3	125.7	3.7	62.3	0.952	0.408	142.6	101.6	68.0	323.5	36.6	8.60
249	239.0	-15.2	126.5	3.6	62.2	0.953	0.404	142.6	102.1	69.0	323.9	36.5	8.58
250	238.9	-15.1	127.3	3.4	62.2	0.953	0.400	142.5	102.6	70.0	324.3	36.4	8.57
251	238.7	-15.1	128.2	3.3	62.2	0.954	0.396	142.5	103.0	71.0	324.7	36.3	8.57
252	238.6	-15.0	129.0	3.1	62.1	0.954	0.392	142.5	103.5	72.0	325.1	36.3	8.56
253	238.4	-14.9	129.8	3.0	62.1	0.955	0.388	142.5	104.0	73.0	325.6	36.2	8.56
254	238.3	-14.9	130.6	2.8	62.0	0.955	0.384	142.5	104.5	74.0	326.0	36.1	8.56
255	238.1	-14.8	131.4	2.6	62.0	0.956	0.380	142.5	104.9	75.0	326.4	36.0	8.56
256	238.0	-14.8	132.2	2.5	61.9	0.956	0.376	142.5	105.4	76.0	326.8	36.0	8.56
257	237.8	-14.7	133.0	2.3	61.9	0.957	0.372	142.5	105.9	77.0	327.3	35.9	8.57
258	237.7	-14.6	133.8	2.1	61.9	0.957	0.368	142.5	106.4	78.0	327.7	35.8	8.58
259	237.5	-14.6	134.6	2.0	61.8	0.958	0.364	142.4	106.8	79.0	328.1	35.7	8.59
260	237.4	-14.5	135.4	1.8	61.8	0.958	0.360	142.4	107.3	80.0	328.6	35.6	8.60
261	237.2	-14.4	136.2	1.6	61.7	0.959	0.356	142.4	107.8	81.0	329.0	35.5	8.62
262	237.1	-14.4	137.0	1.4	61.7	0.959	0.352	142.4	108.2	82.0	329.5	35.4	8.64
263	236.9	-14.3	137.9	1.2	61.6	0.960	0.348	142.4	108.7	83.0	329.9	35.3	8.66
264	236.8	-14.2	138.7	1.0	61.6	0.960	0.344	142.4	109.1	84.0	330.4	35.2	8.68

Table 3 – Continued, evolution of the orbital parameters during the activity period.

λ_o	$\lambda_g - \lambda_o$	β_g	α_g	δ_g	v_g	e	q	i	ω	Ω	λ_{Π}	β_{Π}	a
265	236.6	-14.2	139.5	0.8	61.6	0.961	0.340	142.4	109.6	85.0	330.8	35.1	8.71
266	236.5	-14.1	140.3	0.6	61.5	0.962	0.336	142.4	110.0	86.0	331.3	35.0	8.74
267	236.3	-14.1	141.1	0.4	61.5	0.962	0.333	142.3	110.5	87.0	331.7	34.9	8.77
268	236.2	-14.0	141.9	0.2	61.4	0.963	0.329	142.3	110.9	88.0	332.2	34.8	8.81
269	236.0	-13.9	142.7	0.0	61.4	0.963	0.325	142.3	111.4	89.0	332.7	34.7	8.84
270	235.9	-13.9	143.5	-0.2	61.3	0.964	0.321	142.3	111.8	90.0	333.1	34.6	8.88
271	235.7	-13.8	144.3	-0.4	61.3	0.964	0.318	142.3	112.3	91.0	333.6	34.5	8.93
272	235.6	-13.7	145.1	-0.6	61.3	0.965	0.314	142.3	112.7	92.0	334.1	34.4	8.97
273	235.4	-13.7	145.9	-0.8	61.2	0.966	0.310	142.3	113.2	93.0	334.6	34.3	9.02
274	235.3	-13.6	146.7	-1.1	61.2	0.966	0.307	142.2	113.6	94.0	335.1	34.1	9.07
275	235.1	-13.5	147.5	-1.3	61.1	0.967	0.303	142.2	114.0	95.0	335.6	34.0	9.13
276	235.0	-13.5	148.3	-1.5	61.1	0.967	0.299	142.2	114.5	96.0	336.0	33.9	9.19
277	234.8	-13.4	149.1	-1.7	61.0	0.968	0.296	142.2	114.9	97.0	336.5	33.8	9.25
278	234.7	-13.4	149.9	-2.0	61.0	0.969	0.292	142.2	115.4	98.0	337.0	33.7	9.32
279	234.5	-13.3	150.7	-2.2	60.9	0.969	0.289	142.2	115.8	99.0	337.5	33.5	9.39
280	234.4	-13.2	151.5	-2.4	60.9	0.970	0.285	142.1	116.2	100.0	338.0	33.4	9.47
281	234.2	-13.2	152.3	-2.7	60.9	0.970	0.282	142.1	116.6	101.0	338.6	33.3	9.55