

GEM (#0004): Total of 19938 orbits. $\lambda_o = 260^\circ$, $\lambda_g - \lambda_o = 208.1^\circ$, $\beta_g = 10.4^\circ$, $\Delta r = 2^\circ$, $\Delta \lambda_o = 5^\circ$.

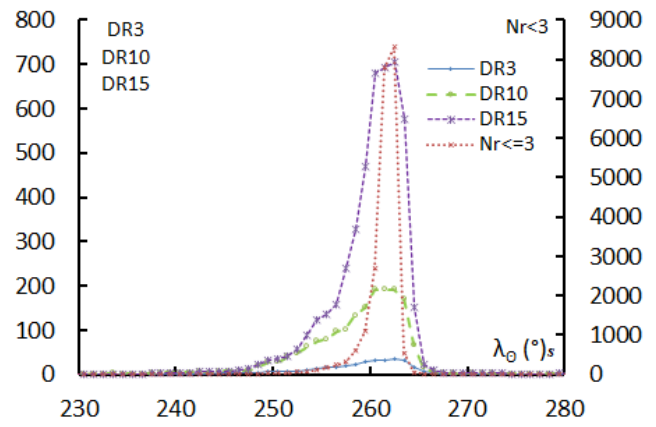
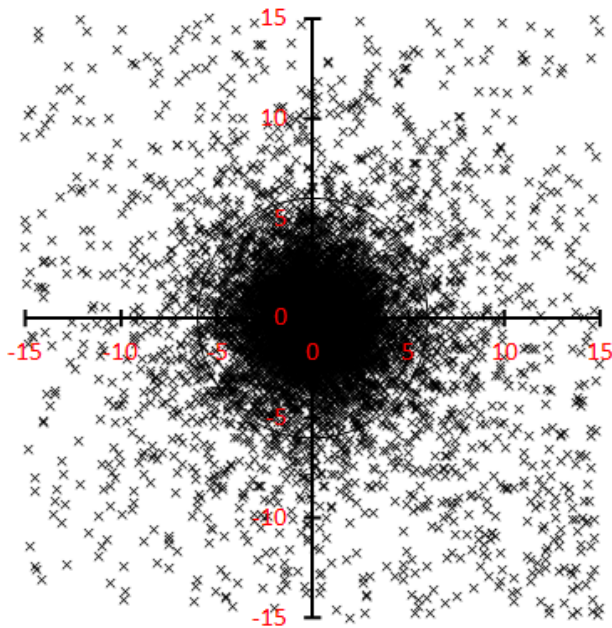


Table 1 – Number per year.

Year	N	Year	N
2007	1357	2013	2593
2008	533	2014	1994
2009	1110	2015	468
2010	1160	2016	706
2011	2103	2017	2233
2012	3613	2018	2068

Table 2 – Activity profiles.

	λ_o	Max
Nr<=3	262.5	8321
DR3	262.5	34.0
DR10	262.5	192.2
DR15	262.5	705.9

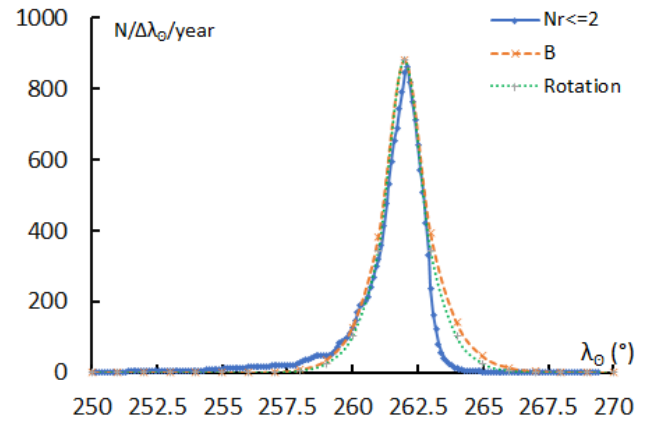


Table 3 – Evolution of the orbital parameters during the activity period.

λ_o	$\lambda_g - \lambda_o$	β_g	α_g	δ_g	v_g	e	q	i	ω	Ω	λ_{π}	β_{π}	a
237	210.6	11.6	87.1	35.0	31.4	0.863	0.148	23.6	326.7	237.0	206.0	-12.7	1.08
238	210.5	11.6	88.2	35.0	31.5	0.864	0.148	23.6	326.6	238.0	206.9	-12.7	1.08
239	210.4	11.5	89.3	35.0	31.6	0.865	0.148	23.6	326.5	239.0	207.8	-12.7	1.09
240	210.3	11.5	90.3	34.9	31.7	0.866	0.148	23.5	326.4	240.0	208.7	-12.8	1.10
241	210.2	11.4	91.4	34.9	31.8	0.867	0.147	23.5	326.3	241.0	209.6	-12.8	1.11
242	210.1	11.4	92.5	34.8	31.9	0.868	0.147	23.5	326.2	242.0	210.5	-12.8	1.11
243	210.0	11.4	93.6	34.8	32.0	0.869	0.147	23.5	326.1	243.0	211.4	-12.8	1.12
244	209.9	11.3	94.6	34.7	32.1	0.870	0.147	23.4	326.0	244.0	212.3	-12.8	1.13
245	209.8	11.3	95.7	34.6	32.2	0.871	0.147	23.4	325.9	245.0	213.2	-12.9	1.14
246	209.7	11.2	96.8	34.5	32.2	0.872	0.147	23.4	325.8	246.0	214.1	-12.9	1.15
247	209.6	11.2	97.8	34.4	32.3	0.873	0.147	23.3	325.7	247.0	215.0	-12.9	1.15
248	209.5	11.1	98.9	34.3	32.4	0.874	0.147	23.3	325.6	248.0	215.8	-12.9	1.16
249	209.4	11.1	99.9	34.2	32.5	0.875	0.147	23.3	325.5	249.0	216.7	-12.9	1.17
250	209.3	11.0	101.0	34.1	32.6	0.876	0.147	23.2	325.4	250.0	217.6	-12.9	1.18
251	209.2	11.0	102.0	34.0	32.7	0.877	0.147	23.2	325.3	251.0	218.5	-13.0	1.19
252	209.0	10.9	103.1	33.9	32.8	0.878	0.147	23.1	325.2	252.0	219.4	-13.0	1.20
253	208.9	10.9	104.1	33.8	32.9	0.879	0.147	23.1	325.1	253.0	220.3	-13.0	1.21
254	208.8	10.9	105.2	33.6	33.0	0.880	0.147	23.1	325.0	254.0	221.2	-13.0	1.22
255	208.7	10.8	106.2	33.5	33.1	0.881	0.147	23.0	324.9	255.0	222.1	-13.0	1.23
256	208.6	10.8	107.3	33.3	33.2	0.882	0.147	23.0	324.8	256.0	223.0	-13.0	1.24
257	208.5	10.7	108.3	33.2	33.3	0.883	0.146	22.9	324.7	257.0	223.8	-13.0	1.25

Table 3 – Continued, evolution of the orbital parameters during the activity period.

λ_{θ}	$\lambda_g - \lambda_{\theta}$	β_g	α_g	δ_g	v_g	e	q	i	ω	Ω	λ_{Π}	β_{Π}	a
258	208.4	10.7	109.4	33.0	33.4	0.884	0.146	22.9	324.5	258.0	224.7	-13.0	1.26
259	208.3	10.6	110.4	32.8	33.5	0.885	0.146	22.9	324.4	259.0	225.6	-13.1	1.27
260	208.2	10.6	111.4	32.7	33.6	0.886	0.146	22.8	324.3	260.0	226.5	-13.1	1.28
261	208.1	10.5	112.4	32.5	33.7	0.887	0.146	22.8	324.2	261.0	227.4	-13.1	1.29
262	208.0	10.5	113.5	32.3	33.8	0.888	0.146	22.7	324.1	262.0	228.3	-13.1	1.31
263	207.9	10.4	114.5	32.1	33.8	0.889	0.146	22.7	324.0	263.0	229.2	-13.1	1.32
264	207.8	10.4	115.5	31.9	33.9	0.890	0.146	22.6	323.9	264.0	230.0	-13.1	1.33
265	207.7	10.3	116.5	31.7	34.0	0.891	0.146	22.6	323.8	265.0	230.9	-13.1	1.34
266	207.6	10.3	117.5	31.5	34.1	0.892	0.146	22.5	323.7	266.0	231.8	-13.1	1.36
267	207.5	10.2	118.5	31.3	34.2	0.893	0.146	22.5	323.6	267.0	232.7	-13.1	1.37
268	207.4	10.2	119.5	31.1	34.3	0.894	0.146	22.4	323.4	268.0	233.6	-13.1	1.38
269	207.3	10.2	120.5	30.8	34.4	0.895	0.146	22.4	323.3	269.0	234.5	-13.1	1.40
270	207.2	10.1	121.5	30.6	34.5	0.896	0.146	22.3	323.2	270.0	235.3	-13.2	1.41
271	207.1	10.1	122.5	30.4	34.6	0.897	0.146	22.3	323.1	271.0	236.2	-13.2	1.43
272	207.0	10.0	123.5	30.1	34.7	0.898	0.146	22.2	323.0	272.0	237.1	-13.2	1.44
273	206.9	10.0	124.5	29.9	34.8	0.900	0.146	22.2	322.9	273.0	238.0	-13.2	1.46