

KCG (#0012): Total of **283** orbits. $\lambda_o = 142^\circ$, $\lambda_g - \lambda_o = 168.0^\circ$, $\beta_g = 74.0^\circ$, $\Delta r = 3^\circ$, $\Delta \lambda_o = 12^\circ$, $\theta = -20^\circ$. 2014 KCG were obstructed by bad weather in Japan. SonotaCo net observers missed the KCG maximum. The maximum of KCG occurs between $\lambda_o = 140^\circ$ and 145° .

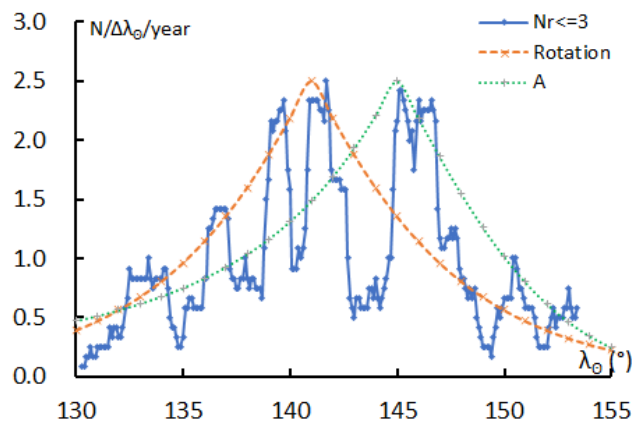
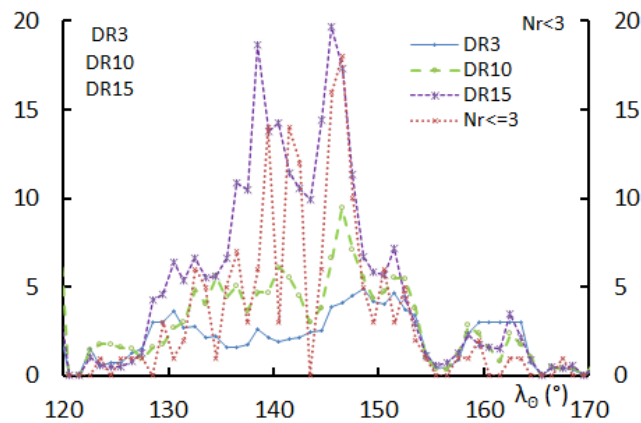
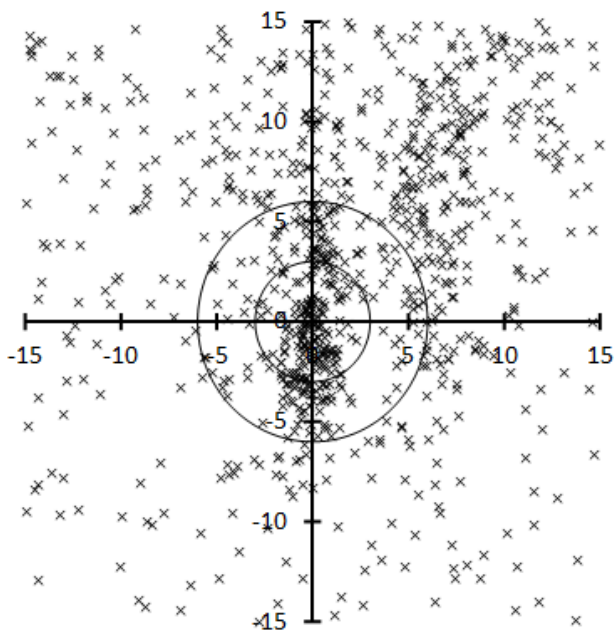


Table 1 – Number per year.

Year	N	Year	N
2007	135	2013	20
2008	2	2014	93
2009	5	2015	4
2010	8	2016	5
2011	2	2017	0
2012	7	2018	2

Table 2 – Activity profiles.

	λ_o	Max
Nr<=3	146.5	18
DR3	148.5	4.9
DR10	146.5	9.5
DR15	145.5	19.7

Table 3 – Evolution of the orbital parameters during the activity period.

λ_o	$\lambda_g - \lambda_o$	β_g	α_g	δ_g	v_g	e	q	i	ω	Ω	λ_{π}	β_{π}	a
125	153.2	61.7	275.0	38.4	19.4	0.719	0.957	27.1	210.3	125.0	332.5	-13.3	3.40
126	153.7	62.3	275.8	39.1	19.6	0.719	0.958	27.5	210.1	126.0	333.2	-13.4	3.41
127	154.1	63.0	276.5	39.8	19.8	0.719	0.959	27.9	209.8	127.0	333.9	-13.5	3.41
128	154.6	63.6	277.3	40.5	20.0	0.719	0.960	28.4	209.6	128.0	334.5	-13.6	3.41
129	155.1	64.3	278.1	41.2	20.1	0.718	0.961	28.8	209.3	129.0	335.2	-13.6	3.41
130	155.6	64.9	278.8	41.9	20.3	0.718	0.961	29.2	209.1	130.0	335.9	-13.7	3.41
131	156.2	65.5	279.6	42.7	20.5	0.717	0.962	29.6	208.8	131.0	336.5	-13.8	3.40
132	156.7	66.2	280.3	43.4	20.7	0.716	0.963	30.1	208.5	132.0	337.2	-13.8	3.40
133	157.3	66.8	281.0	44.1	20.8	0.715	0.964	30.5	208.2	133.0	337.8	-13.9	3.39
134	158.0	67.4	281.7	44.9	21.0	0.714	0.965	30.9	207.9	134.0	338.4	-13.9	3.38
135	158.7	68.0	282.4	45.6	21.2	0.713	0.966	31.3	207.6	135.0	339.1	-13.9	3.37
136	159.4	68.7	283.1	46.4	21.4	0.712	0.967	31.8	207.3	136.0	339.7	-14.0	3.36
137	160.1	69.3	283.7	47.1	21.5	0.710	0.968	32.2	206.9	137.0	340.3	-14.0	3.34
138	160.9	69.9	284.4	47.9	21.7	0.709	0.969	32.6	206.6	138.0	340.9	-14.0	3.33
139	161.7	70.5	285.0	48.7	21.9	0.707	0.970	33.1	206.2	139.0	341.4	-14.0	3.31
140	162.6	71.1	285.6	49.4	22.1	0.705	0.971	33.5	205.9	140.0	342.0	-13.9	3.29
141	163.6	71.7	286.2	50.2	22.2	0.703	0.972	33.9	205.5	141.0	342.6	-13.9	3.27
142	164.6	72.3	286.7	51.0	22.4	0.700	0.973	34.4	205.1	142.0	343.2	-13.9	3.25
143	165.7	72.9	287.3	51.8	22.6	0.698	0.975	34.8	204.7	143.0	343.7	-13.8	3.23
144	166.8	73.5	287.8	52.6	22.7	0.695	0.976	35.2	204.3	144.0	344.3	-13.7	3.20
145	168.1	74.1	288.3	53.4	22.9	0.693	0.977	35.7	203.9	145.0	344.8	-13.7	3.18

Table 3 – Continued, evolution of the orbital parameters during the activity period.

λ_{θ}	$\lambda_g - \lambda_{\theta}$	β_g	α_g	δ_g	ν_g	e	q	i	ω	Ω	λ_{Π}	β_{Π}	a
146	169.4	74.6	288.8	54.2	23.1	0.690	0.978	36.1	203.5	146.0	345.3	-13.6	3.15
147	170.8	75.2	289.3	55.0	23.3	0.687	0.979	36.5	203.0	147.0	345.8	-13.5	3.12
148	172.3	75.7	289.7	55.8	23.4	0.683	0.980	37.0	202.6	148.0	346.4	-13.3	3.10
149	174.0	76.3	290.1	56.6	23.6	0.680	0.981	37.4	202.1	149.0	346.9	-13.2	3.07
150	175.8	76.8	290.5	57.4	23.8	0.677	0.983	37.8	201.6	150.0	347.4	-13.0	3.04
151	177.7	77.3	290.8	58.2	24.0	0.673	0.984	38.2	201.1	151.0	347.9	-12.9	3.01
152	179.8	77.8	291.1	59.0	24.1	0.669	0.985	38.7	200.6	152.0	348.3	-12.7	2.98
153	182.1	78.3	291.4	59.8	24.3	0.665	0.986	39.1	200.1	153.0	348.8	-12.5	2.95
154	184.5	78.8	291.7	60.7	24.5	0.661	0.987	39.5	199.5	154.0	349.3	-12.3	2.92
155	187.2	79.2	291.9	61.5	24.7	0.657	0.988	40.0	198.9	155.0	349.7	-12.0	2.88
156	190.0	79.7	292.0	62.3	24.8	0.653	0.990	40.4	198.4	156.0	350.2	-11.8	2.85
157	193.2	80.0	292.1	63.1	25.0	0.649	0.991	40.8	197.8	157.0	350.6	-11.5	2.82
158	196.5	80.4	292.2	63.9	25.2	0.644	0.992	41.3	197.2	158.0	351.1	-11.2	2.79
159	200.1	80.7	292.2	64.8	25.4	0.640	0.993	41.7	196.5	159.0	351.5	-10.9	2.75
160	203.9	81.0	292.1	65.6	25.5	0.635	0.994	42.1	195.9	160.0	351.9	-10.6	2.72