

LMI (#0022): Total of 245 orbits. $\lambda_o = 209.6^\circ$, $\lambda_g - \lambda_o = 297.9^\circ$, $\beta_g = 26.2^\circ$, $\Delta r = 3^\circ$, $\Delta \lambda_o = 5^\circ$.

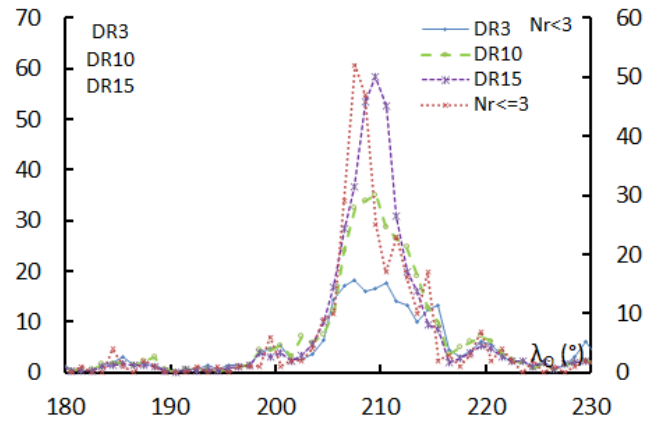
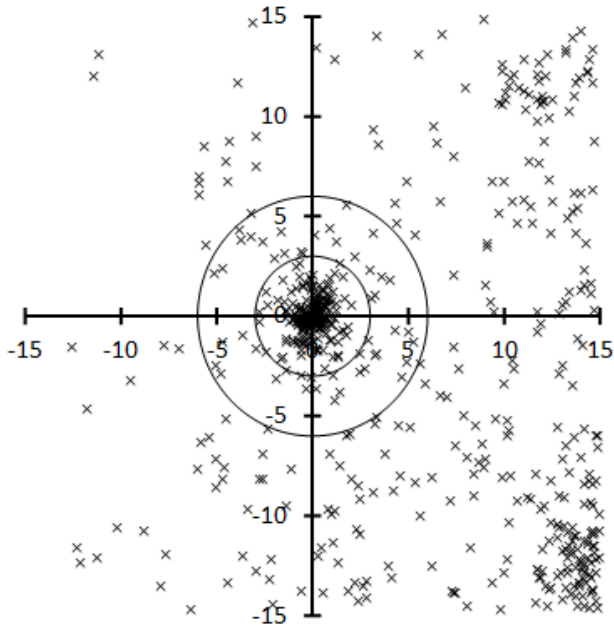


Table 1 – Number per year.

Year	N	Year	N
2007	21	2013	3
2008	12	2014	20
2009	30	2015	29
2010	8	2016	20
2011	11	2017	4
2012	42	2018	45

Table 2 – Activity profiles.

	λ_o	Max
Nr<=3	207.5	52
DR3	207.5	18.3
DR10	209.5	35.0
DR15	209.5	58.4

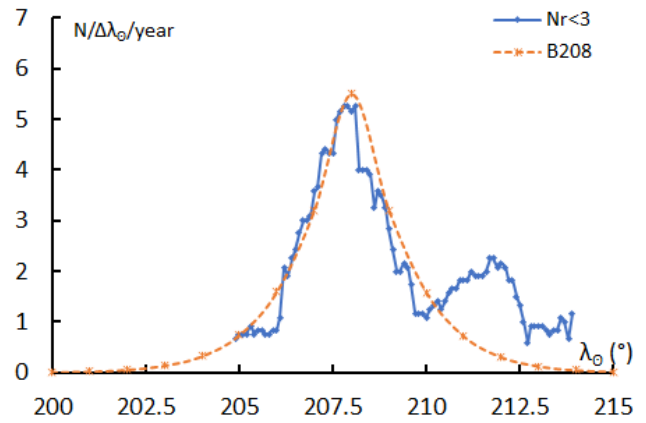


Table 3 – Evolution of the orbital parameters during the activity period.

λ_o	$\lambda_g - \lambda_o$	β_g	α_g	δ_g	v_g	e	q	i	ω	Ω	λ_{π}	β_{π}	a
200	297.3	25.5	149.5	39.7	61.6	0.953	0.624	126.4	103.5	200.0	88.0	51.5	13.33
201	297.3	25.6	150.7	39.4	61.6	0.954	0.624	126.2	103.5	201.0	88.9	51.7	13.61
202	297.4	25.7	151.9	39.1	61.5	0.955	0.623	126.0	103.4	202.0	89.9	51.9	13.90
203	297.5	25.7	153.1	38.8	61.5	0.956	0.622	125.8	103.4	203.0	90.9	52.0	14.21
204	297.6	25.8	154.2	38.5	61.5	0.957	0.622	125.7	103.4	204.0	91.8	52.2	14.54
205	297.6	25.9	155.4	38.1	61.5	0.958	0.621	125.5	103.3	205.0	92.8	52.4	14.89
206	297.7	25.9	156.5	37.8	61.5	0.959	0.621	125.3	103.3	206.0	93.7	52.6	15.26
207	297.8	26.0	157.7	37.5	61.5	0.960	0.620	125.1	103.3	207.0	94.7	52.8	15.66
208	297.8	26.1	158.8	37.2	61.4	0.961	0.619	124.9	103.2	208.0	95.7	52.9	16.08
209	297.9	26.2	160.0	36.8	61.4	0.963	0.619	124.8	103.2	209.0	96.6	53.1	16.53
210	298.0	26.2	161.1	36.5	61.4	0.964	0.618	124.6	103.2	210.0	97.6	53.3	17.02
211	298.0	26.3	162.2	36.2	61.4	0.965	0.617	124.4	103.2	211.0	98.5	53.5	17.54
212	298.1	26.4	163.3	35.8	61.4	0.966	0.617	124.2	103.1	212.0	99.4	53.6	18.11
213	298.2	26.5	164.4	35.5	61.3	0.967	0.616	124.0	103.1	213.0	100.4	53.8	18.72
214	298.2	26.5	165.5	35.1	61.3	0.968	0.616	123.9	103.1	214.0	101.3	54.0	19.38
215	298.3	26.6	166.6	34.8	61.3	0.969	0.615	123.7	103.1	215.0	102.3	54.2	20.10
216	298.4	26.7	167.7	34.4	61.3	0.971	0.615	123.5	103.1	216.0	103.2	54.3	20.89
217	298.5	26.7	168.8	34.1	61.3	0.972	0.614	123.3	103.0	217.0	104.1	54.5	21.76
218	298.5	26.8	169.8	33.7	61.2	0.973	0.613	123.1	103.0	218.0	105.1	54.7	22.71
219	298.6	26.9	170.9	33.4	61.2	0.974	0.613	122.9	103.0	219.0	106.0	54.8	23.76
220	298.7	27.0	172.0	33.0	61.2	0.975	0.612	122.8	103.0	220.0	106.9	55.0	24.93