

OER (#0338): Total of **169** orbits. $\lambda_{\theta} = 231^{\circ}$, $\lambda_g - \lambda_{\theta} = 184.4^{\circ}$, $\beta_g = -21.5^{\circ}$, $\Delta r = 3^{\circ}$, $\Delta \lambda_{\theta} = 15^{\circ}$. Unclear activity. The maximum lays somewhere between $\lambda_{\theta} = 220^{\circ} \sim 245^{\circ}$.

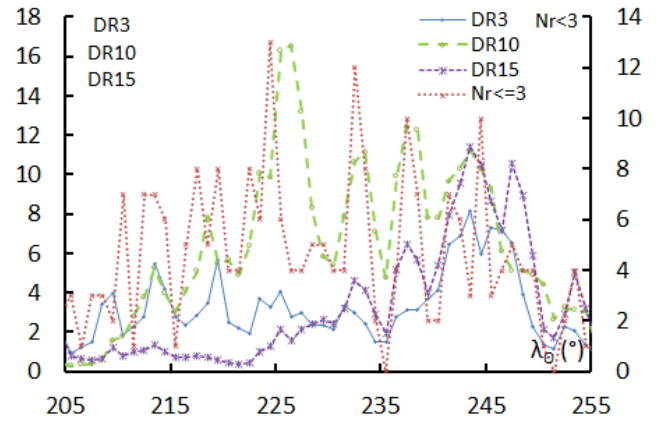
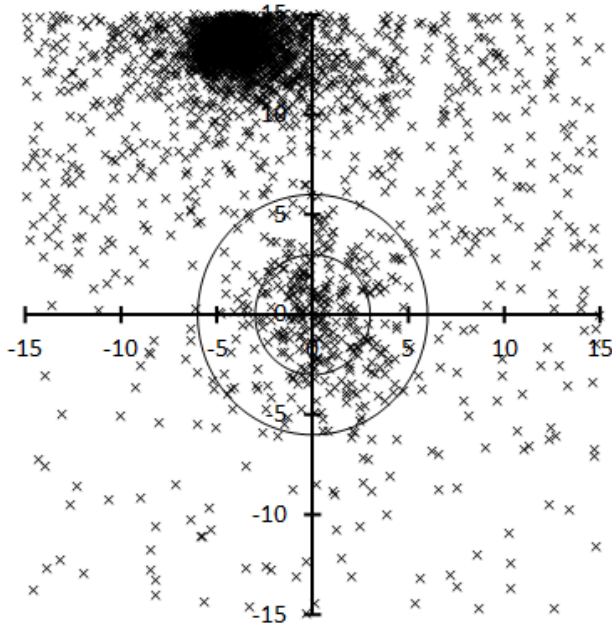


Table 1 – Number per year.

Year	N	Year	N
2007	12	2013	14
2008	14	2014	12
2009	15	2015	11
2010	16	2016	10
2011	15	2017	23
2012	11	2018	16

Table 2 – Activity profiles.

	λ_{θ}	Max
Nr<=3	224.5	13
DR3	243.5	8.1
DR10	226.5	16.5
DR15	243.5	11.4

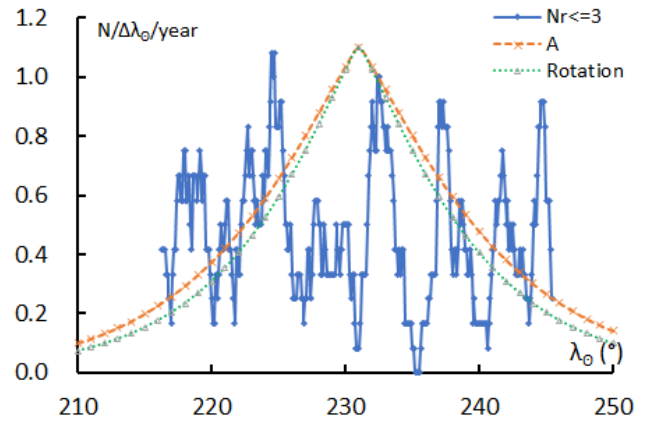


Table 3 – Evolution of the orbital parameters during the activity period.

λ_{θ}	$\lambda_g - \lambda_{\theta}$	β_g	α_g	δ_g	v_g	e	q	i	ω	Ω	λ_{Π}	β_{Π}	a
210	191.5	-15.1	43.7	0.9	30.5	0.881	0.381	18.3	108.6	30.0	139.5	17.3	3.19
211	191.2	-15.3	44.4	0.9	30.4	0.880	0.387	18.4	107.8	31.0	139.7	17.5	3.22
212	190.9	-15.6	45.2	0.8	30.3	0.879	0.394	18.5	107.0	32.0	139.8	17.6	3.25
213	190.6	-15.9	45.9	0.7	30.1	0.878	0.400	18.5	106.2	33.0	140.0	17.8	3.27
214	190.3	-16.2	46.6	0.7	30.0	0.877	0.407	18.6	105.4	34.0	140.2	17.9	3.30
215	190.0	-16.4	47.3	0.6	29.9	0.876	0.413	18.7	104.6	35.0	140.3	18.1	3.33
216	189.7	-16.7	48.1	0.5	29.7	0.875	0.419	18.8	103.8	36.0	140.5	18.2	3.36
217	189.4	-17.0	48.8	0.4	29.6	0.874	0.426	18.8	103.0	37.0	140.7	18.3	3.38
218	189.1	-17.3	49.5	0.4	29.5	0.873	0.432	18.9	102.2	38.0	140.8	18.5	3.41
219	188.8	-17.5	50.2	0.3	29.3	0.872	0.439	19.0	101.4	39.0	141.0	18.6	3.44
220	188.5	-17.8	50.9	0.2	29.2	0.872	0.445	19.0	100.6	40.0	141.2	18.7	3.47
221	188.2	-18.1	51.6	0.1	29.1	0.871	0.452	19.1	99.8	41.0	141.3	18.8	3.49
222	187.9	-18.4	52.3	0.0	28.9	0.870	0.458	19.1	99.0	42.0	141.5	18.9	3.52
223	187.6	-18.6	53.0	-0.1	28.8	0.869	0.465	19.2	98.2	43.0	141.7	19.0	3.55
224	187.3	-18.9	53.7	-0.2	28.7	0.868	0.471	19.2	97.4	44.0	141.9	19.1	3.58
225	187.0	-19.2	54.4	-0.3	28.5	0.868	0.477	19.3	96.6	45.0	142.0	19.1	3.60
226	186.7	-19.4	55.1	-0.4	28.4	0.867	0.484	19.3	95.9	46.0	142.2	19.2	3.63
227	186.4	-19.7	55.8	-0.5	28.3	0.866	0.490	19.4	95.1	47.0	142.4	19.3	3.66
228	186.1	-20.0	56.5	-0.6	28.1	0.865	0.496	19.4	94.3	48.0	142.6	19.3	3.68
229	185.8	-20.2	57.2	-0.7	28.0	0.864	0.503	19.4	93.5	49.0	142.7	19.4	3.71
230	185.4	-20.5	57.9	-0.8	27.9	0.864	0.509	19.5	92.8	50.0	142.9	19.4	3.74

Table 3 – Continued, evolution of the orbital parameters during the activity period.

λ_{θ}	$\lambda_g - \lambda_{\theta}$	β_g	α_g	δ_g	v_g	e	q	i	ω	Ω	λ_{Π}	β_{Π}	a
231	185.1	-20.8	58.6	-1.0	27.7	0.863	0.515	19.5	92.0	51.0	143.1	19.5	3.76
232	184.8	-21.0	59.3	-1.1	27.6	0.862	0.521	19.5	91.2	52.0	143.3	19.5	3.79
233	184.5	-21.3	59.9	-1.2	27.5	0.862	0.528	19.5	90.5	53.0	143.5	19.5	3.81
234	184.2	-21.6	60.6	-1.3	27.3	0.861	0.534	19.6	89.7	54.0	143.7	19.6	3.84
235	183.8	-21.8	61.3	-1.5	27.2	0.860	0.540	19.6	88.9	55.0	143.9	19.6	3.86
236	183.5	-22.1	62.0	-1.6	27.0	0.859	0.546	19.6	88.2	56.0	144.1	19.6	3.88
237	183.2	-22.4	62.6	-1.7	26.9	0.859	0.552	19.6	87.4	57.0	144.3	19.6	3.91
238	182.9	-22.6	63.3	-1.8	26.8	0.858	0.558	19.6	86.7	58.0	144.5	19.6	3.93
239	182.6	-22.9	64.0	-2.0	26.6	0.857	0.564	19.6	85.9	59.0	144.7	19.6	3.95
240	182.2	-23.2	64.6	-2.1	26.5	0.857	0.570	19.6	85.2	60.0	144.9	19.6	3.97
241	181.9	-23.4	65.3	-2.3	26.4	0.856	0.576	19.6	84.5	61.0	145.1	19.6	4.00
242	181.6	-23.7	65.9	-2.4	26.2	0.855	0.582	19.7	83.7	62.0	145.3	19.5	4.02
243	181.2	-23.9	66.6	-2.6	26.1	0.854	0.588	19.7	83.0	63.0	145.6	19.5	4.04
244	180.9	-24.2	67.2	-2.7	26.0	0.854	0.594	19.7	82.2	64.0	145.8	19.5	4.06
245	180.6	-24.4	67.9	-2.9	25.8	0.853	0.599	19.7	81.5	65.0	146.0	19.4	4.08
246	180.2	-24.7	68.5	-3.0	25.7	0.852	0.605	19.6	80.8	66.0	146.2	19.4	4.09
247	179.9	-25.0	69.1	-3.2	25.6	0.851	0.611	19.6	80.1	67.0	146.5	19.3	4.11
248	179.6	-25.2	69.8	-3.3	25.4	0.851	0.617	19.6	79.4	68.0	146.7	19.3	4.13
249	179.2	-25.5	70.4	-3.5	25.3	0.850	0.622	19.6	78.6	69.0	147.0	19.2	4.14
250	178.9	-25.7	71.0	-3.7	25.2	0.849	0.628	19.6	77.9	70.0	147.2	19.2	4.16