

OLE (#0515): Total of 172 orbits. $\lambda_o = 290^\circ$, $\lambda_g - \lambda_o = 208.0^\circ$, $\beta_g = -6.9^\circ$, $\Delta r = 3^\circ$, $\Delta \lambda_o = 15^\circ$.

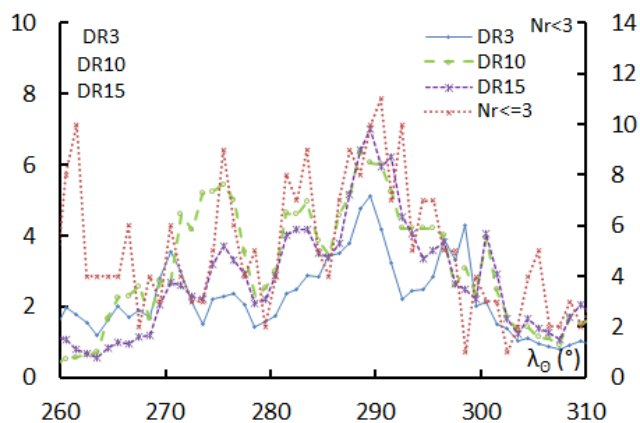
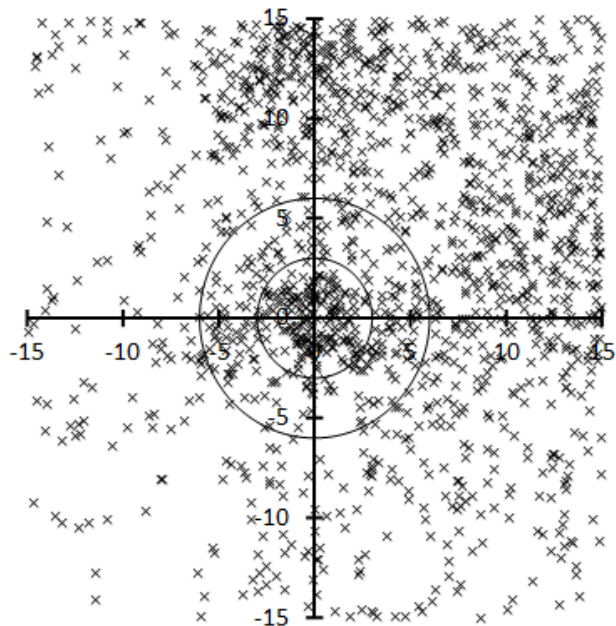


Table 1 – Number per year.

Year	N	Year	N
2007	6	2013	18
2008	11	2014	13
2009	17	2015	22
2010	10	2016	10
2011	14	2017	25
2012	9	2018	17

Table 2 – Activity profiles.

	λ_o	Max
Nr<=3	290.5	11
DR3	289.5	5.1
DR10	288.5	6.4
DR15	289.5	7.0

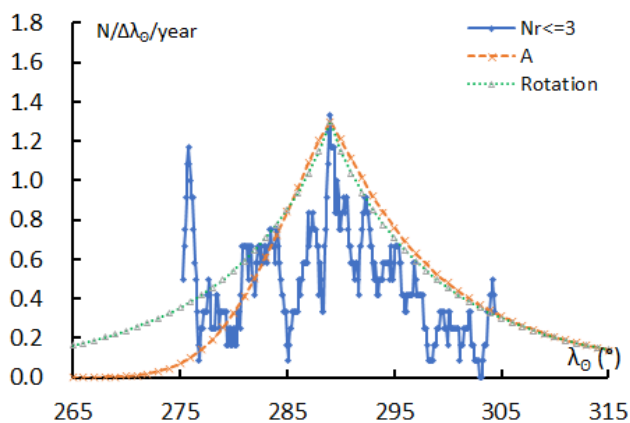


Table 3 – Evolution of the orbital parameters during the activity period.

λ_o	$\lambda_g - \lambda_o$	β_g	α_g	δ_g	v_g	e	q	i	ω	Ω	λ_{Π}	β_{Π}	a
265	209.9	-9.7	115.0	11.6	37.5	0.933	0.102	28.1	149.0	85.0	237.0	14.0	1.52
266	209.8	-9.6	116.0	11.6	37.6	0.934	0.101	27.9	149.1	86.0	238.1	13.9	1.54
267	209.7	-9.4	116.9	11.5	37.8	0.936	0.100	27.8	149.1	87.0	239.1	13.9	1.57
268	209.7	-9.3	117.9	11.5	38.0	0.938	0.099	27.7	149.2	88.0	240.2	13.8	1.59
269	209.6	-9.2	118.8	11.5	38.2	0.940	0.097	27.5	149.3	89.0	241.2	13.7	1.62
270	209.5	-9.0	119.8	11.4	38.3	0.942	0.096	27.4	149.4	90.0	242.3	13.6	1.65
271	209.5	-8.9	120.7	11.4	38.5	0.943	0.095	27.3	149.4	91.0	243.3	13.5	1.68
272	209.4	-8.7	121.7	11.3	38.7	0.945	0.094	27.1	149.5	92.0	244.4	13.4	1.71
273	209.3	-8.6	122.6	11.2	38.9	0.947	0.093	26.9	149.6	93.0	245.4	13.2	1.74
274	209.3	-8.5	123.6	11.2	39.1	0.949	0.091	26.8	149.7	94.0	246.4	13.1	1.78
275	209.2	-8.3	124.5	11.1	39.2	0.950	0.090	26.6	149.8	95.0	247.5	13.0	1.82
276	209.1	-8.2	125.5	11.0	39.4	0.952	0.089	26.4	149.9	96.0	248.5	12.9	1.85
277	209.1	-8.1	126.4	10.9	39.6	0.954	0.088	26.2	150.0	97.0	249.6	12.8	1.89
278	209.0	-7.9	127.4	10.9	39.8	0.955	0.087	26.0	150.0	98.0	250.6	12.7	1.94
279	208.9	-7.8	128.3	10.8	39.9	0.957	0.086	25.8	150.1	99.0	251.7	12.5	1.98
280	208.9	-7.6	129.3	10.7	40.1	0.958	0.084	25.6	150.2	100.0	252.7	12.4	2.03
281	208.8	-7.5	130.2	10.6	40.3	0.960	0.083	25.4	150.3	101.0	253.7	12.3	2.08
282	208.7	-7.4	131.1	10.5	40.5	0.961	0.082	25.2	150.4	102.0	254.8	12.1	2.13
283	208.7	-7.2	132.1	10.3	40.6	0.963	0.081	25.0	150.5	103.0	255.8	12.0	2.19
284	208.6	-7.1	133.0	10.2	40.8	0.964	0.080	24.7	150.6	104.0	256.9	11.9	2.25
285	208.5	-6.9	134.0	10.1	41.0	0.966	0.079	24.5	150.7	105.0	257.9	11.7	2.31

Table 3 – Continued, evolution of the orbital parameters during the activity period.

λ_{σ}	$\lambda_g - \lambda_{\sigma}$	β_g	α_g	δ_g	v_g	e	q	i	ω	Ω	λ_{Π}	β_{Π}	a
286	208.5	-6.8	134.9	10.0	41.2	0.967	0.078	24.2	150.7	106.0	258.9	11.6	2.38
287	208.4	-6.7	135.9	9.9	41.3	0.969	0.077	24.0	150.8	107.0	260.0	11.4	2.45
288	208.3	-6.5	136.8	9.7	41.5	0.970	0.076	23.7	150.9	108.0	261.0	11.3	2.53
289	208.3	-6.4	137.7	9.6	41.7	0.971	0.075	23.5	151.0	109.0	262.1	11.1	2.62
290	208.2	-6.2	138.7	9.4	41.9	0.973	0.074	23.2	151.1	110.0	263.1	11.0	2.71
291	208.1	-6.1	139.6	9.3	42.0	0.974	0.073	22.9	151.2	111.0	264.1	10.8	2.80
292	208.1	-6.0	140.6	9.1	42.2	0.975	0.072	22.6	151.3	112.0	265.2	10.6	2.91
293	208.0	-5.8	141.5	9.0	42.4	0.977	0.071	22.3	151.4	113.0	266.2	10.5	3.02
294	207.9	-5.7	142.4	8.8	42.6	0.978	0.070	22.0	151.5	114.0	267.3	10.3	3.15
295	207.9	-5.5	143.4	8.7	42.7	0.979	0.069	21.6	151.6	115.0	268.3	10.1	3.29
296	207.8	-5.4	144.3	8.5	42.9	0.980	0.068	21.3	151.7	116.0	269.3	9.9	3.44
297	207.7	-5.3	145.2	8.3	43.1	0.981	0.067	21.0	151.8	117.0	270.4	9.7	3.61
298	207.6	-5.1	146.2	8.1	43.3	0.983	0.066	20.6	151.8	118.0	271.4	9.6	3.79
299	207.6	-5.0	147.1	8.0	43.4	0.984	0.065	20.2	151.9	119.0	272.4	9.4	4.00
300	207.5	-4.8	148.0	7.8	43.6	0.985	0.065	19.9	152.0	120.0	273.5	9.2	4.24
301	207.4	-4.7	149.0	7.6	43.8	0.986	0.064	19.5	152.1	121.0	274.5	9.0	4.50
302	207.4	-4.6	149.9	7.4	44.0	0.987	0.063	19.1	152.2	122.0	275.5	8.8	4.81
303	207.3	-4.4	150.8	7.2	44.1	0.988	0.062	18.7	152.3	123.0	276.6	8.6	5.16
304	207.2	-4.3	151.7	7.0	44.3	0.989	0.061	18.3	152.4	124.0	277.6	8.4	5.57
305	207.2	-4.1	152.7	6.8	44.5	0.990	0.060	17.9	152.5	125.0	278.6	8.2	6.05