

PAU (#0183): Total of 59 orbits. $\lambda_o = 135.1^\circ$, $\lambda_g - \lambda_o = 210.8^\circ$, $\beta_g = -16.7^\circ$, $\Delta r = 3^\circ$, $\Delta \lambda_o = 10^\circ$. The listed maximum λ_o for PAU in the SD are dispersed widely $\lambda_o = 123.7^\circ$ to 135.3° . The early traditional ‘Piscis Austrinids’ in late July cannot be found in recent video observations. The listed activity is another independent one.

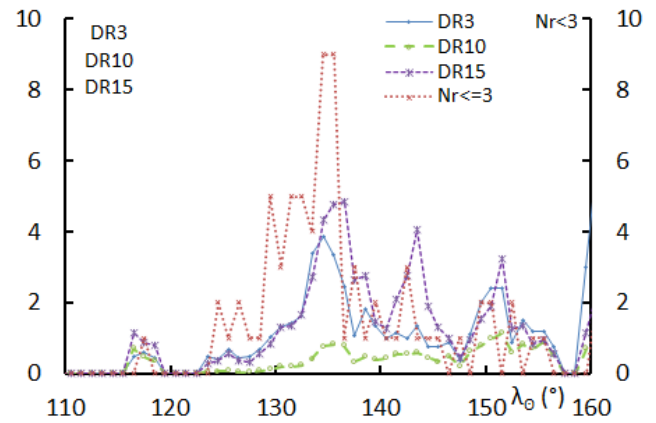
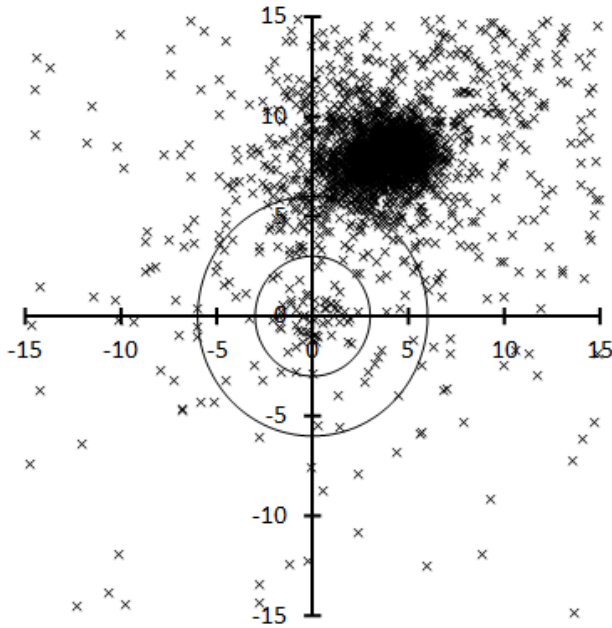


Table 1 – Number per year.

Year	N	Year	N
2007	6	2013	3
2008	6	2014	4
2009	1	2015	4
2010	11	2016	5
2011	4	2017	3
2012	3	2018	9

Table 2 – Activity profiles.

	λ_o	Max
Nr<=3	134.5	9
DR3	134.5	3.9
DR10	135.5	0.8
DR15	136.5	4.8

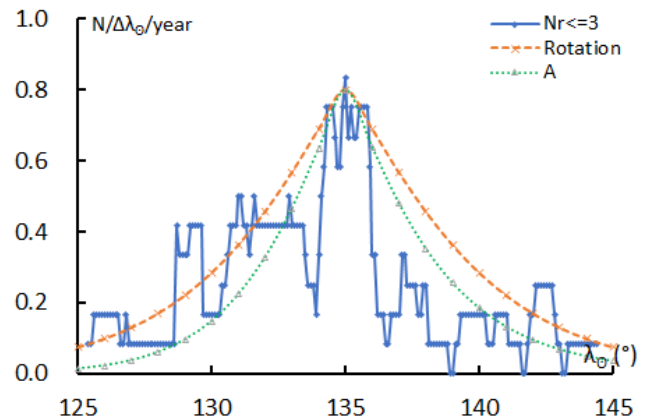


Table 3 – Evolution of the orbital parameters during the activity period.

λ_o	$\lambda_g - \lambda_o$	β_g	α_g	δ_g	v_g	e	q	i	ω	Ω	λ_{Π}	β_{Π}	a
125	212.4	-15.7	345.4	-23.3	42.9	0.959	0.111	58.2	145.1	305.0	104.8	29.1	2.70
126	212.2	-15.7	346.2	-23.0	42.9	0.959	0.112	57.9	144.8	306.0	105.4	29.2	2.76
127	212.0	-15.7	347.0	-22.7	42.9	0.960	0.113	57.6	144.5	307.0	106.1	29.3	2.83
128	211.9	-15.8	347.8	-22.4	42.9	0.961	0.114	57.2	144.2	308.0	106.7	29.4	2.89
129	211.7	-15.8	348.6	-22.1	43.0	0.961	0.115	56.9	144.0	309.0	107.3	29.5	2.96
130	211.5	-15.8	349.4	-21.8	43.0	0.962	0.116	56.6	143.7	310.0	108.0	29.6	3.03
131	211.4	-15.8	350.2	-21.5	43.0	0.962	0.118	56.3	143.4	311.0	108.6	29.7	3.11
132	211.2	-15.8	351.0	-21.2	43.0	0.963	0.119	55.9	143.1	312.0	109.2	29.8	3.19
133	211.0	-15.9	351.8	-20.9	43.0	0.963	0.120	55.6	142.9	313.0	109.8	29.9	3.27
134	210.9	-15.9	352.5	-20.5	43.0	0.964	0.121	55.3	142.6	314.0	110.5	30.0	3.36
135	210.7	-15.9	353.3	-20.2	43.0	0.965	0.122	55.0	142.3	315.0	111.1	30.1	3.45
136	210.5	-15.9	354.1	-19.9	43.0	0.965	0.124	54.7	142.0	316.0	111.7	30.1	3.55
137	210.4	-15.9	354.9	-19.6	43.0	0.966	0.125	54.4	141.7	317.0	112.3	30.2	3.65
138	210.2	-16.0	355.7	-19.3	43.0	0.967	0.126	54.0	141.4	318.0	112.9	30.3	3.77
139	210.0	-16.0	356.4	-19.0	43.0	0.967	0.127	53.7	141.1	319.0	113.5	30.4	3.88
140	209.8	-16.0	357.2	-18.7	43.0	0.968	0.128	53.4	140.8	320.0	114.1	30.5	4.01
141	209.7	-16.0	358.0	-18.4	43.1	0.969	0.130	53.1	140.5	321.0	114.7	30.6	4.14
142	209.5	-16.0	358.8	-18.1	43.1	0.969	0.131	52.8	140.2	322.0	115.3	30.6	4.29
143	209.3	-16.1	359.5	-17.7	43.1	0.970	0.132	52.5	139.9	323.0	115.9	30.7	4.44
144	209.2	-16.1	0.3	-17.4	43.1	0.971	0.134	52.2	139.6	324.0	116.5	30.8	4.60
145	209.0	-16.1	1.1	-17.1	43.1	0.972	0.135	51.9	139.3	325.0	117.1	30.9	4.78