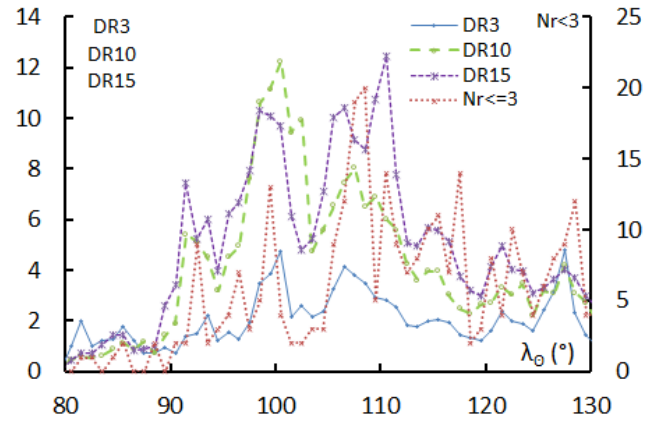
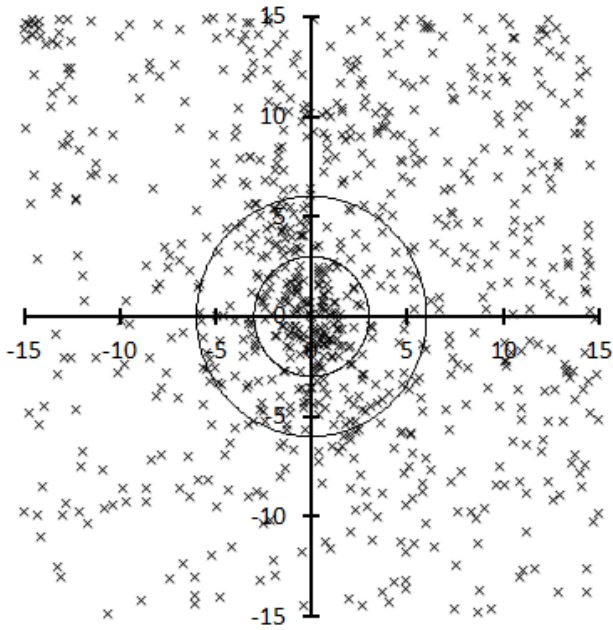


**PPS\_1 (#0372):** Total of 137 orbits.  $\lambda_{\theta} = 109.6^{\circ}$ ,  $\lambda_g - \lambda_{\theta} = 281.9^{\circ}$ ,  $\beta_g = 19.6^{\circ}$ ,  $\Delta r = 3^{\circ}$ ,  $\Delta \lambda_{\theta} = 7^{\circ}$ . The listed maxima  $\lambda_{\theta}$  of PPS in the shower database are widely dispersed from  $\lambda_{\theta} = 94^{\circ}$  to  $109.6^{\circ}$ . We divide it into two components in *Tables 1 to 3*.

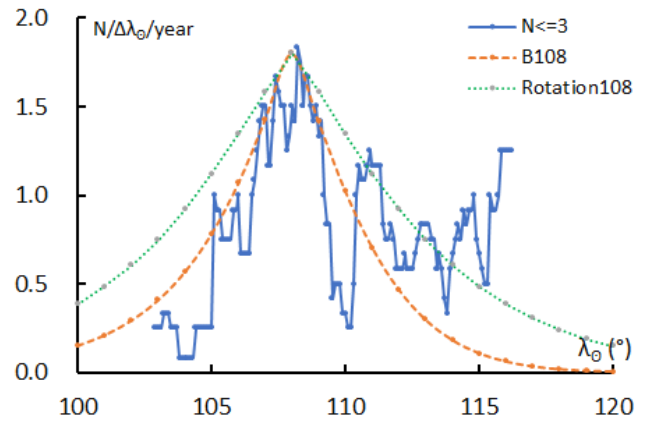


*Table 1 – Number per year.*

Year	N	Year	N
2007	1	2013	18
2008	2	2014	3
2009	8	2015	12
2010	17	2016	10
2011	25	2017	15
2012	10	2018	16

*Table 2 – Activity profiles.*

	$\lambda_{\theta}$	Max
Nr<=3	108.5	20
DR3	106.5	4.1
DR10	102.5	9.9
DR15	110.5	12.4



*Table 3 – Evolution of the orbital parameters during the activity period.*

$\lambda_{\theta}$	$\lambda_g - \lambda_{\theta}$	$\beta_g$	$\alpha_g$	$\delta_g$	$\nu_g$	$e$	$q$	$i$	$\omega$	$\Omega$	$\lambda_{\Pi}$	$\beta_{\Pi}$	$a$
100	283.6	18.9	14.1	26.6	65.1	0.852	0.871	145.4	133.5	100.0	321.0	24.3	5.87
101	283.3	18.8	14.9	26.8	65.2	0.852	0.875	145.7	134.2	101.0	321.3	23.8	5.91
102	283.1	18.6	15.7	26.9	65.3	0.852	0.880	146.1	135.0	102.0	321.7	23.2	5.95
103	282.9	18.5	16.6	27.1	65.4	0.853	0.884	146.4	135.8	103.0	322.0	22.7	5.99
104	282.6	18.3	17.4	27.2	65.5	0.853	0.889	146.7	136.6	104.0	322.4	22.2	6.04
105	282.4	18.2	18.2	27.4	65.6	0.854	0.893	147.1	137.3	105.0	322.7	21.6	6.10
106	282.2	18.0	19.0	27.6	65.7	0.854	0.897	147.4	138.1	106.0	323.0	21.1	6.15
107	281.9	17.9	19.8	27.7	65.8	0.855	0.901	147.7	138.9	107.0	323.4	20.6	6.21
108	281.7	17.7	20.7	27.9	65.9	0.856	0.906	148.0	139.7	108.0	323.7	20.0	6.28
109	281.5	17.6	21.5	28.0	66.0	0.857	0.910	148.3	140.5	109.0	324.0	19.5	6.35
110	281.2	17.5	22.3	28.2	66.1	0.858	0.914	148.7	141.3	110.0	324.4	19.0	6.42
111	281.0	17.3	23.1	28.3	66.2	0.859	0.918	149.0	142.1	111.0	324.7	18.4	6.50
112	280.8	17.2	24.0	28.5	66.3	0.860	0.922	149.3	142.9	112.0	325.0	17.9	6.58
113	280.6	17.0	24.8	28.6	66.4	0.861	0.925	149.6	143.7	113.0	325.3	17.4	6.67
114	280.3	16.9	25.7	28.7	66.5	0.863	0.929	149.9	144.6	114.0	325.6	16.9	6.77
115	280.1	16.7	26.5	28.9	66.6	0.864	0.933	150.2	145.4	115.0	325.9	16.4	6.87
116	279.9	16.6	27.4	29.0	66.7	0.866	0.936	150.6	146.2	116.0	326.3	15.9	6.98
117	279.6	16.4	28.2	29.1	66.8	0.868	0.940	150.9	147.0	117.0	326.6	15.4	7.10
118	279.4	16.3	29.1	29.3	66.9	0.869	0.944	151.2	147.8	118.0	326.9	14.9	7.22
119	279.2	16.1	29.9	29.4	67.0	0.871	0.947	151.5	148.6	119.0	327.2	14.4	7.35
120	279.0	16.0	30.8	29.5	67.1	0.873	0.950	151.8	149.5	120.0	327.5	13.9	7.50