

QUA (#0010): Total of 2404 orbits. $\lambda_o = 283.2^\circ$, $\lambda_g - \lambda_o = 277.7^\circ$, $\beta_g = 63.4^\circ$, $\Delta r = 3^\circ$, $\Delta \lambda_o = 5^\circ$.

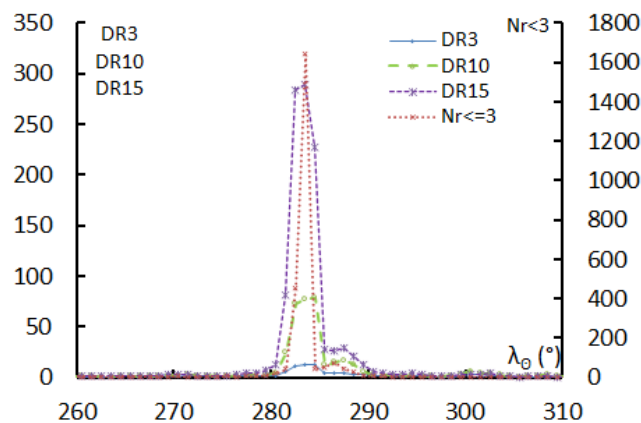
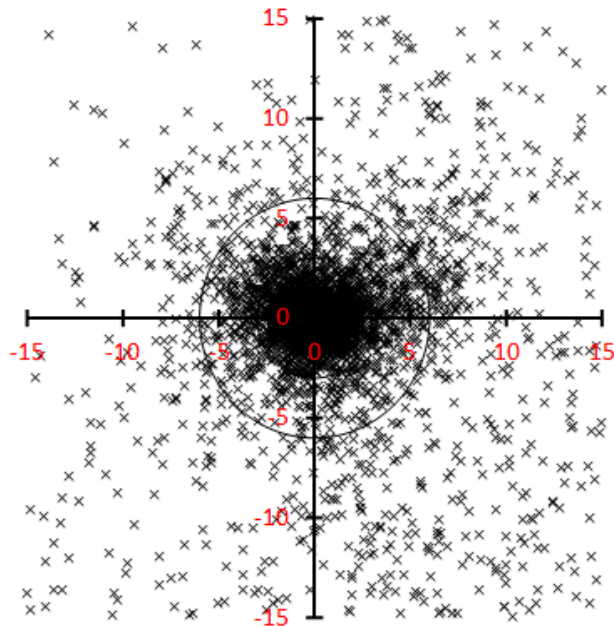


Table 1 – Number per year.

Year	N	Year	N
2007	71	2013	238
2008	124	2014	469
2009	471	2015	47
2010	138	2016	247
2011	98	2017	112
2012	159	2018	230

Table 2 – Activity profiles.

	λ_o	Max
Nr<=3	283.5	1641
DR3	284.5	13.2
DR10	284.5	78.4
DR15	283.5	289.1

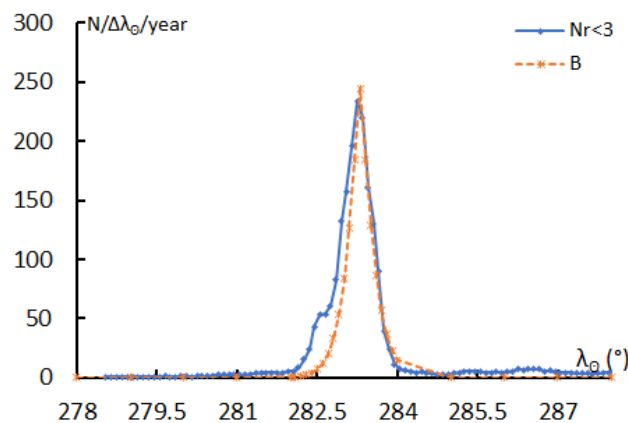


Table 3 – Evolution of the orbital parameters during the activity period.

λ_o	$\lambda_g - \lambda_o$	β_g	α_g	δ_g	v_g	e	q	i	ω	Ω	λ_{π}	β_{π}	a
275	277.4	61.6	223.6	50.0	41.2	0.596	0.978	73.3	170.1	275.0	92.1	9.5	2.42
276	277.3	61.8	224.4	50.0	41.1	0.599	0.978	73.0	170.3	276.0	93.1	9.3	2.44
277	277.2	62.1	225.2	49.9	41.0	0.603	0.978	72.7	170.5	277.0	94.2	9.0	2.46
278	277.1	62.3	226.0	49.9	40.8	0.606	0.979	72.4	170.8	278.0	95.2	8.8	2.48
279	277.1	62.6	226.7	49.8	40.7	0.610	0.979	72.1	171.0	279.0	96.2	8.6	2.51
280	277.0	62.9	227.5	49.8	40.6	0.613	0.979	71.8	171.2	280.0	97.2	8.4	2.53
281	276.9	63.1	228.3	49.7	40.5	0.617	0.979	71.5	171.4	281.0	98.2	8.2	2.55
282	276.8	63.4	229.0	49.7	40.4	0.620	0.979	71.1	171.6	282.0	99.3	7.9	2.58
282.1	276.8	63.4	229.1	49.7	40.4	0.620	0.979	71.1	171.6	282.1	99.4	7.9	2.58
282.2	276.8	63.4	229.2	49.7	40.3	0.621	0.979	71.1	171.6	282.2	99.5	7.9	2.58
282.3	276.8	63.4	229.2	49.7	40.3	0.621	0.979	71.1	171.7	282.3	99.6	7.9	2.58
282.4	276.8	63.5	229.3	49.7	40.3	0.621	0.979	71.0	171.7	282.4	99.7	7.9	2.59
282.5	276.8	63.5	229.4	49.7	40.3	0.622	0.979	71.0	171.7	282.5	99.8	7.8	2.59
282.6	276.8	63.5	229.5	49.7	40.3	0.622	0.979	71.0	171.7	282.6	99.9	7.8	2.59
282.7	276.8	63.5	229.5	49.7	40.3	0.623	0.979	70.9	171.7	282.7	100.0	7.8	2.59
282.8	276.8	63.6	229.6	49.7	40.3	0.623	0.979	70.9	171.8	282.8	100.1	7.8	2.60
282.9	276.7	63.6	229.7	49.7	40.3	0.623	0.979	70.9	171.8	282.9	100.2	7.8	2.60
283	276.7	63.6	229.8	49.7	40.3	0.624	0.979	70.8	171.8	283.0	100.3	7.7	2.60
283.1	276.7	63.6	229.8	49.7	40.2	0.624	0.979	70.8	171.8	283.1	100.4	7.7	2.60
283.2	276.7	63.7	229.9	49.7	40.2	0.624	0.979	70.8	171.8	283.2	100.5	7.7	2.61
283.3	276.7	63.7	230.0	49.7	40.2	0.625	0.979	70.7	171.9	283.3	100.6	7.7	2.61

Table 3 – Continued, evolution of the orbital parameters during the activity period.

λ_{θ}	$\lambda_g - \lambda_{\theta}$	β_g	α_g	δ_g	v_g	e	q	i	ω	Ω	λ_{Π}	β_{Π}	a
283.4	276.7	63.7	230.0	49.7	40.2	0.625	0.980	70.7	171.9	283.4	100.7	7.7	2.61
283.5	276.7	63.8	230.1	49.7	40.2	0.625	0.980	70.7	171.9	283.5	100.8	7.6	2.61
283.6	276.7	63.8	230.2	49.6	40.2	0.626	0.980	70.7	171.9	283.6	100.9	7.6	2.62
283.7	276.7	63.8	230.3	49.6	40.2	0.626	0.980	70.6	171.9	283.7	101.0	7.6	2.62
283.8	276.7	63.8	230.3	49.6	40.2	0.626	0.980	70.6	172.0	283.8	101.1	7.6	2.62
283.9	276.7	63.9	230.4	49.6	40.1	0.627	0.980	70.6	172.0	283.9	101.2	7.6	2.62
284	276.7	63.9	230.5	49.6	40.1	0.627	0.980	70.5	172.0	284.0	101.3	7.5	2.63
285	276.6	64.1	231.2	49.6	40.0	0.631	0.980	70.2	172.2	285.0	102.3	7.3	2.65
286	276.5	64.4	232.0	49.6	39.9	0.634	0.980	69.9	172.4	286.0	103.4	7.1	2.68
287	276.4	64.6	232.7	49.6	39.8	0.638	0.980	69.6	172.6	287.0	104.4	6.9	2.70
288	276.3	64.9	233.4	49.6	39.7	0.641	0.980	69.3	172.8	288.0	105.4	6.8	2.73
289	276.2	65.2	234.1	49.6	39.5	0.645	0.980	69.0	173.0	289.0	106.5	6.6	2.76
290	276.1	65.4	234.8	49.6	39.4	0.648	0.981	68.7	173.1	290.0	107.5	6.4	2.79
291	276.0	65.7	235.5	49.6	39.3	0.651	0.981	68.4	173.3	291.0	108.5	6.2	2.81
292	275.9	65.9	236.2	49.6	39.2	0.655	0.981	68.1	173.5	292.0	109.6	6.0	2.84
293	275.8	66.2	236.9	49.6	39.1	0.658	0.981	67.8	173.7	293.0	110.6	5.8	2.87
294	275.7	66.4	237.6	49.6	39.0	0.662	0.981	67.5	173.9	294.0	111.6	5.7	2.90
295	275.6	66.7	238.2	49.7	38.8	0.665	0.982	67.2	174.0	295.0	112.7	5.5	2.93
296	275.5	66.9	238.9	49.7	38.7	0.669	0.982	66.9	174.2	296.0	113.7	5.3	2.96