

SCC (#0097): Total of 135 orbits. $\lambda_{\theta} = 284.1^{\circ}$, $\lambda_g - \lambda_{\theta} = 188.7^{\circ}$, $\beta_g = -5.4^{\circ}$, $\Delta r = 3^{\circ}$, $\Delta \lambda_{\theta} = 10^{\circ}$. SCC is a problematic activity in the SD. The author checked every SCC line in the SD and the activity shown below seems to be most plausible shower, although its activity profile is as unclear as the ANT behavior.

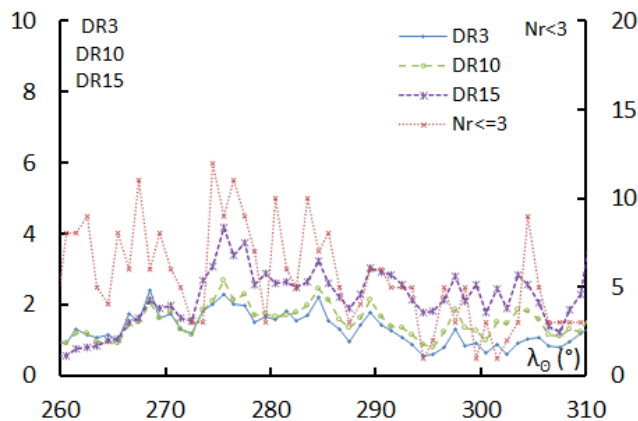
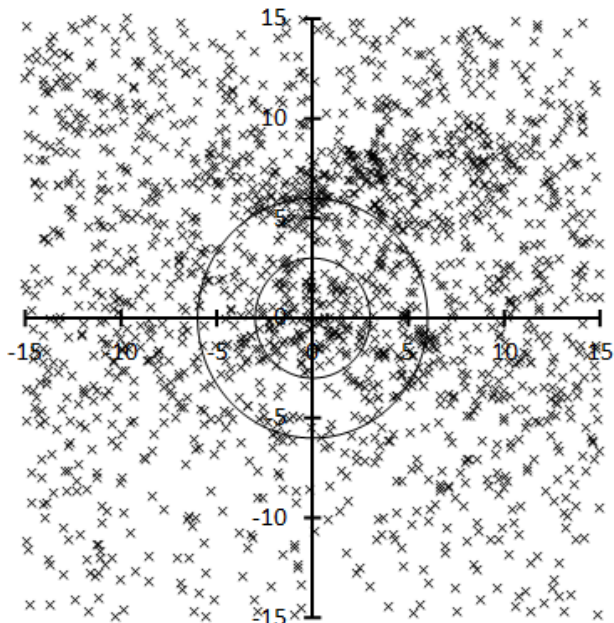


Table 1 – Number per year.

Year	N	Year	N
2007	4	2013	14
2008	13	2014	7
2009	7	2015	14
2010	8	2016	11
2011	13	2017	15
2012	10	2018	19

Table 2 – Activity profiles.

	λ_{θ}	Max
Nr<=3	274.5	12
DR3	275.5	2.3
DR10	275.5	2.7
DR15	275.5	4.2

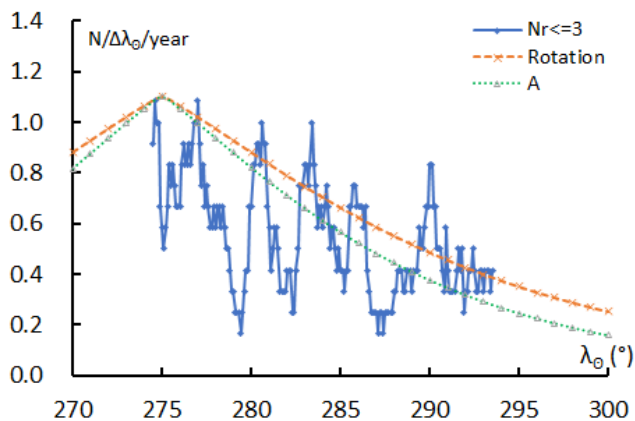


Table 3 – Evolution of the orbital parameters during the activity period.

λ_{θ}	$\lambda_g - \lambda_{\theta}$	β_g	α_g	δ_g	v_g	e	q	i	ω	Ω	λ_{Π}	β_{Π}	a
270	189.8	-5.7	100.3	17.4	26.7	0.799	0.406	5.9	108.8	90.0	198.9	5.6	2.02
271	189.8	-5.5	101.3	17.5	26.8	0.800	0.406	5.7	108.7	91.0	199.8	5.4	2.03
272	189.7	-5.4	102.3	17.5	26.8	0.800	0.406	5.6	108.7	92.0	200.8	5.3	2.04
273	189.7	-5.3	103.3	17.6	26.8	0.801	0.406	5.5	108.6	93.0	201.7	5.2	2.04
274	189.7	-5.2	104.3	17.6	26.9	0.802	0.407	5.3	108.6	94.0	202.6	5.1	2.05
275	189.6	-5.0	105.3	17.6	26.9	0.803	0.407	5.2	108.5	95.0	203.6	4.9	2.06
276	189.6	-4.9	106.3	17.7	26.9	0.803	0.407	5.1	108.4	96.0	204.5	4.8	2.07
277	189.5	-4.8	107.3	17.7	26.9	0.804	0.407	5.0	108.4	97.0	205.4	4.7	2.08
278	189.5	-4.6	108.3	17.7	27.0	0.805	0.407	4.8	108.3	98.0	206.4	4.6	2.09
279	189.4	-4.5	109.3	17.7	27.0	0.806	0.407	4.7	108.2	99.0	207.3	4.5	2.10
280	189.4	-4.4	110.3	17.7	27.0	0.807	0.407	4.6	108.2	100.0	208.2	4.3	2.11
281	189.4	-4.3	111.4	17.7	27.0	0.807	0.408	4.4	108.1	101.0	209.2	4.2	2.11
282	189.3	-4.1	112.4	17.7	27.1	0.808	0.408	4.3	108.0	102.0	210.1	4.1	2.12
283	189.3	-4.0	113.4	17.6	27.1	0.809	0.408	4.2	108.0	103.0	211.0	4.0	2.13
284	189.2	-3.9	114.4	17.6	27.1	0.810	0.408	4.0	107.9	104.0	212.0	3.8	2.14
285	189.2	-3.8	115.4	17.6	27.1	0.810	0.408	3.9	107.9	105.0	212.9	3.7	2.15
286	189.1	-3.6	116.4	17.5	27.2	0.811	0.408	3.8	107.8	106.0	213.8	3.6	2.16
287	189.1	-3.5	117.4	17.5	27.2	0.812	0.409	3.7	107.7	107.0	214.8	3.5	2.17
288	189.1	-3.4	118.4	17.4	27.2	0.813	0.409	3.5	107.7	108.0	215.7	3.4	2.18
289	189.0	-3.2	119.4	17.4	27.2	0.813	0.409	3.4	107.6	109.0	216.6	3.2	2.19
290	189.0	-3.1	120.4	17.3	27.3	0.814	0.409	3.3	107.5	110.0	217.6	3.1	2.20