

SLD (#0526): Total of 60 orbits. $\lambda_o = 221^\circ$, $\lambda_g - \lambda_o = 265.7^\circ$, $\beta_g = 53.7^\circ$, $\Delta r = 3^\circ$, $\Delta \lambda_o = 5^\circ$.

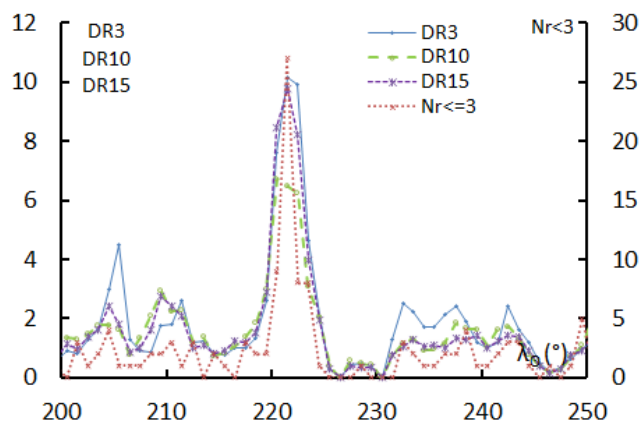
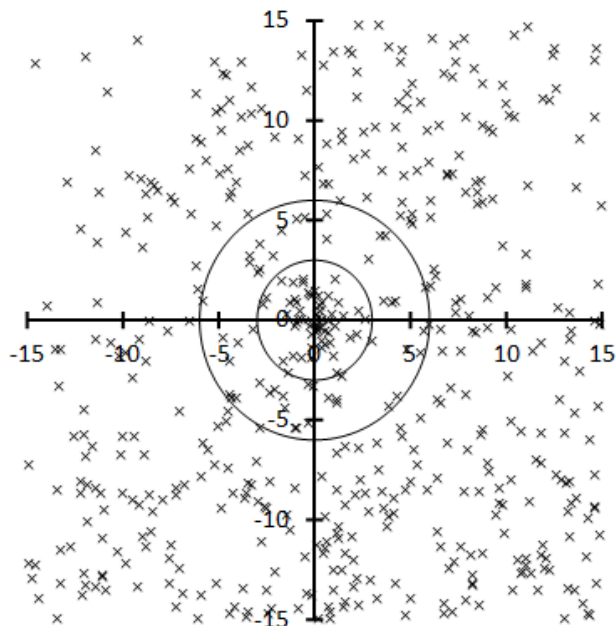


Table 1 – Number per year.

Year	N	Year	N
2007	1	2013	1
2008	2	2014	7
2009	6	2015	9
2010	9	2016	5
2011	8	2017	4
2012	4	2018	4

Table 2 – Activity profiles.

	λ_o	Max
Nr<=3	221.5	27.0
DR3	221.5	10.1
DR10	220.5	6.7
DR15	221.5	9.8

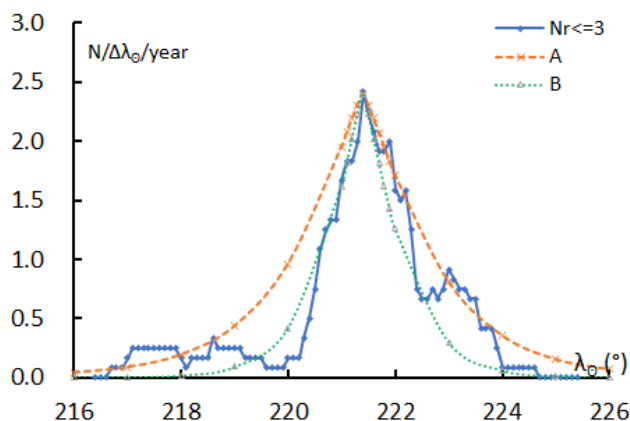


Table 3 – Evolution of the orbital parameters during the activity period.

λ_o	$\lambda_g - \lambda_o$	β_g	α_g	δ_g	v_g	e	q	i	ω	Ω	λ_{π}	β_{π}	a
216	262.7	53.9	151.5	71.2	49.5	0.816	0.981	88.5	193.3	216.0	36.3	-13.3	5.33
217	263.1	53.8	153.5	70.7	49.3	0.799	0.982	88.5	192.8	217.0	37.4	-12.8	4.88
218	263.5	53.8	155.4	70.1	49.2	0.782	0.983	88.4	192.3	218.0	38.4	-12.3	4.50
219	263.9	53.7	157.2	69.6	49.0	0.765	0.983	88.3	191.8	219.0	39.4	-11.8	4.18
220	264.3	53.7	159.0	69.0	48.8	0.748	0.984	88.2	191.2	220.0	40.4	-11.2	3.90
221	264.7	53.6	160.7	68.5	48.6	0.731	0.985	88.1	190.7	221.0	41.4	-10.7	3.66
221.1	264.8	53.6	160.8	68.4	48.6	0.730	0.985	88.1	190.6	221.1	41.5	-10.6	3.64
221.2	264.8	53.6	161.0	68.4	48.6	0.728	0.985	88.1	190.6	221.2	41.6	-10.6	3.62
221.3	264.8	53.6	161.2	68.3	48.6	0.726	0.985	88.1	190.5	221.3	41.7	-10.5	3.60
221.4	264.9	53.6	161.3	68.2	48.6	0.725	0.985	88.1	190.5	221.4	41.8	-10.5	3.58
221.5	264.9	53.6	161.5	68.2	48.5	0.723	0.985	88.1	190.4	221.5	41.9	-10.4	3.55
221.6	265.0	53.6	161.7	68.1	48.5	0.721	0.985	88.0	190.3	221.6	42.0	-10.3	3.53
221.7	265.0	53.6	161.8	68.1	48.5	0.720	0.985	88.0	190.3	221.7	42.1	-10.3	3.51
221.8	265.1	53.6	162.0	68.0	48.5	0.718	0.985	88.0	190.2	221.8	42.2	-10.2	3.49
221.9	265.1	53.6	162.2	68.0	48.5	0.716	0.985	88.0	190.2	221.9	42.3	-10.2	3.47
222	265.1	53.6	162.3	67.9	48.5	0.715	0.985	88.0	190.1	222.0	42.4	-10.1	3.45
223	265.5	53.5	163.9	67.3	48.3	0.698	0.986	87.9	189.5	223.0	43.3	-9.5	3.27
224	266.0	53.5	165.5	66.7	48.1	0.682	0.986	87.8	188.9	224.0	44.3	-8.9	3.10
225	266.4	53.4	167.0	66.1	47.9	0.666	0.987	87.7	188.3	225.0	45.3	-8.3	2.95
226	266.8	53.3	168.4	65.6	47.8	0.650	0.987	87.6	187.7	226.0	46.3	-7.7	2.82