

URS (#0015): Total of 390 orbits. $\lambda_o = 271^\circ$, $\lambda_g - \lambda_o = 218.5^\circ$, $\beta_g = 72.1^\circ$, $\Delta r = 3^\circ$, $\Delta \lambda_o = 5^\circ$.

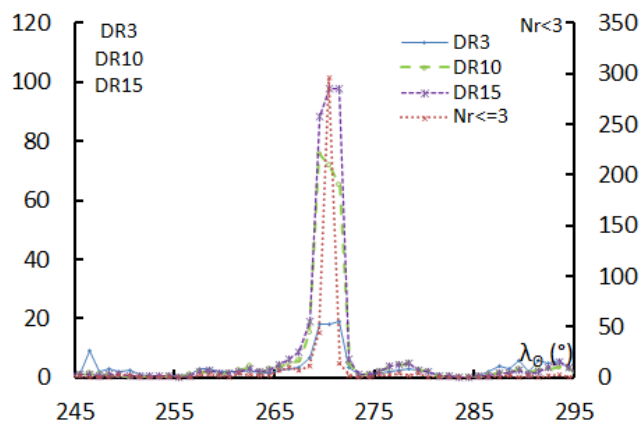
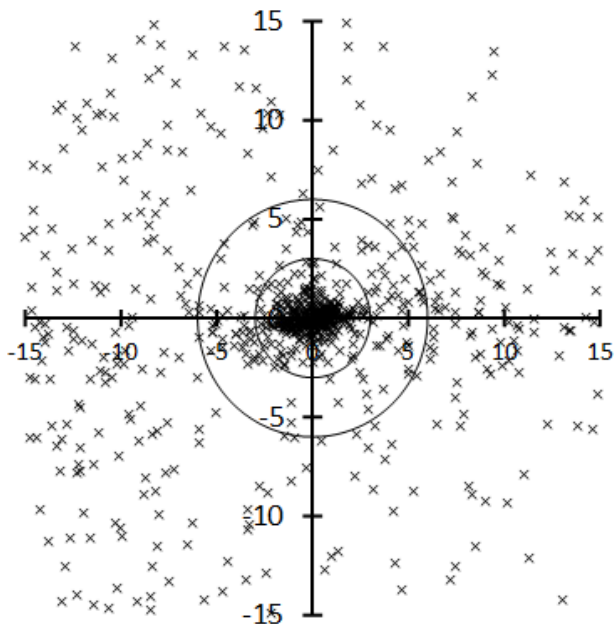


Table 1 – Number per year.

Year	N	Year	N
2007	2	2013	19
2008	11	2014	18
2009	45	2015	5
2010	45	2016	14
2011	81	2017	124
2012	6	2018	20

Table 2 – Activity profiles.

	λ_o	Max
Nr<=3	270.5	296
DR3	271.5	19.1
DR10	269.5	75.8
DR15	270.5	97.8

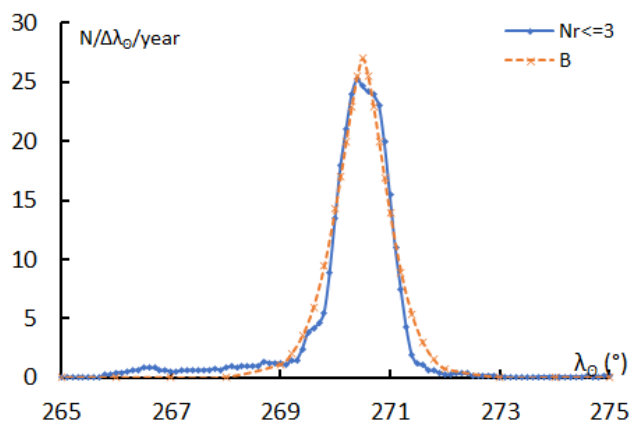


Table 3 – Evolution of the orbital parameters during the activity period.

λ_o	$\lambda_g - \lambda_o$	β_g	α_g	δ_g	v_g	e	q	i	ω	Ω	λ_{π}	β_{π}	a
260	222.5	65.6	190.7	76.9	36.6	0.840	0.900	59.0	215.8	260.0	100.4	-30.1	5.63
261	222.2	66.2	193.7	76.8	36.3	0.837	0.904	58.4	214.8	261.0	101.0	-29.1	5.55
262	222.0	66.8	196.6	76.7	36.0	0.834	0.909	57.8	213.8	262.0	101.6	-28.1	5.48
263	221.7	67.4	199.5	76.6	35.6	0.831	0.913	57.2	212.9	263.0	102.3	-27.2	5.41
264	221.4	68.0	202.3	76.5	35.3	0.828	0.917	56.6	211.9	264.0	102.9	-26.2	5.34
265	221.1	68.6	205.0	76.3	34.9	0.825	0.921	56.0	211.0	265.0	103.5	-25.3	5.27
266	220.7	69.2	207.7	76.1	34.6	0.822	0.924	55.5	210.0	266.0	104.1	-24.3	5.21
267	220.4	69.9	210.3	76.0	34.2	0.819	0.928	54.9	209.1	267.0	104.7	-23.4	5.14
268	220.0	70.5	212.9	75.8	33.9	0.816	0.932	54.3	208.1	268.0	105.3	-22.5	5.07
269	219.6	71.1	215.4	75.6	33.6	0.813	0.935	53.7	207.2	269.0	105.9	-21.6	5.01
270	219.2	71.7	217.8	75.4	33.2	0.810	0.938	53.1	206.3	270.0	106.5	-20.8	4.94
270.1	219.2	71.7	218.1	75.4	33.2	0.810	0.938	53.0	206.2	270.1	106.6	-20.7	4.94
270.2	219.1	71.8	218.3	75.4	33.1	0.810	0.939	53.0	206.1	270.2	106.7	-20.6	4.93
270.3	219.1	71.9	218.5	75.4	33.1	0.809	0.939	52.9	206.0	270.3	106.7	-20.5	4.92
270.4	219.0	71.9	218.8	75.4	33.1	0.809	0.939	52.9	205.9	270.4	106.8	-20.4	4.92
270.5	219.0	72.0	219.0	75.3	33.0	0.809	0.940	52.8	205.9	270.5	106.8	-20.3	4.91
270.6	218.9	72.0	219.2	75.3	33.0	0.808	0.940	52.7	205.8	270.6	106.9	-20.2	4.90
270.7	218.9	72.1	219.5	75.3	33.0	0.808	0.940	52.7	205.7	270.7	106.9	-20.2	4.90
270.8	218.8	72.2	219.7	75.3	32.9	0.808	0.941	52.6	205.6	270.8	107.0	-20.1	4.89
270.9	218.8	72.2	220.0	75.3	32.9	0.807	0.941	52.6	205.5	270.9	107.1	-20.0	4.88
271	218.7	72.3	220.2	75.2	32.9	0.807	0.941	52.5	205.4	271.0	107.1	-19.9	4.88

Table 3 – Continued, evolution of the orbital parameters during the activity period.

λ_{θ}	$\lambda_g - \lambda_{\theta}$	β_g	α_g	δ_g	ν_g	e	q	i	ω	Ω	λ_{Π}	β_{Π}	a
272	218.3	72.9	222.5	75.1	32.5	0.804	0.944	51.9	204.5	272.0	107.7	-19.1	4.81
273	217.8	73.5	224.8	74.9	32.2	0.801	0.947	51.4	203.6	273.0	108.3	-18.2	4.75
274	217.2	74.1	227.0	74.7	31.8	0.797	0.950	50.8	202.7	274.0	108.8	-17.4	4.69
275	216.6	74.7	229.2	74.5	31.5	0.794	0.952	50.2	201.9	275.0	109.4	-16.6	4.62