

XUM (#0341): Total of 133 orbits. $\lambda_o = 298^\circ$, $\lambda_g - \lambda_o = 217.9^\circ$, $\beta_g = 25.7^\circ$, $\Delta r = 3^\circ$, $\Delta \lambda_o = 5^\circ$.

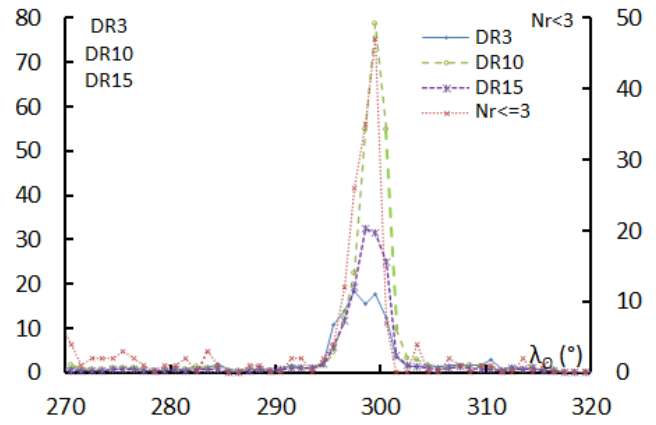
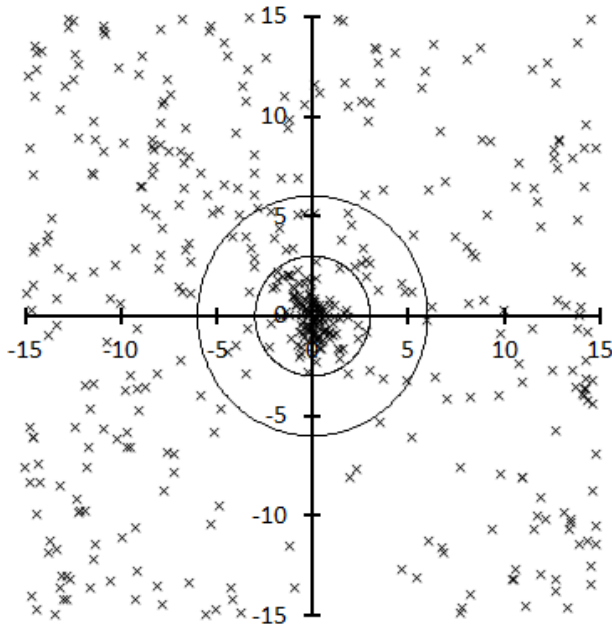


Table 1 – Number per year.

Year	N	Year	N
2007	4	2013	26
2008	7	2014	12
2009	10	2015	9
2010	15	2016	8
2011	8	2017	11
2012	8	2018	15

Table 2 – Activity profiles.

	λ_o	Max
Nr<=3	299.5	47
DR3	297.5	18.2
DR10	299.5	78.9
DR15	298.5	32.3

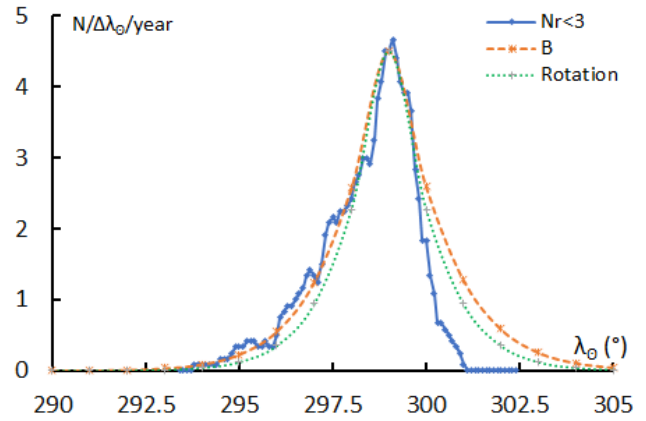


Table 3 – Evolution of the orbital parameters during the activity period.

λ_o	$\lambda_g - \lambda_o$	β_g	α_g	δ_g	v_g	e	q	i	ω	Ω	λ_{π}	β_{π}	a
290	221.5	26.7	164.8	35.6	43.4	0.850	0.237	76.7	310.7	290.0	275.0	-47.6	1.58
291	221.1	26.6	165.4	35.2	43.1	0.851	0.234	75.7	311.1	291.0	275.2	-46.9	1.57
292	220.7	26.4	165.9	34.9	42.9	0.852	0.231	74.6	311.5	292.0	275.3	-46.2	1.56
293	220.3	26.3	166.4	34.5	42.6	0.853	0.229	73.5	311.9	293.0	275.5	-45.5	1.55
294	219.9	26.2	167.0	34.2	42.3	0.853	0.226	72.4	312.3	294.0	275.6	-44.9	1.54
295	219.5	26.1	167.5	33.8	42.0	0.854	0.224	71.3	312.6	295.0	275.8	-44.2	1.53
296	219.1	25.9	168.0	33.5	41.8	0.854	0.222	70.2	312.9	296.0	276.0	-43.6	1.52
297	218.8	25.8	168.6	33.1	41.5	0.854	0.220	69.1	313.2	297.0	276.2	-42.9	1.51
298	218.4	25.7	169.1	32.8	41.2	0.855	0.219	68.0	313.5	298.0	276.5	-42.3	1.50
299	218.0	25.6	169.6	32.4	40.9	0.855	0.217	66.9	313.7	299.0	276.7	-41.7	1.49
300	217.6	25.4	170.2	32.1	40.7	0.855	0.216	65.8	313.9	300.0	276.9	-41.1	1.49
301	217.2	25.3	170.7	31.7	40.4	0.859	0.201	68.9	316.2	301.0	281.9	-40.2	1.43
302	216.9	25.2	171.2	31.3	40.1	0.855	0.214	63.6	314.3	302.0	277.5	-39.9	1.47
303	216.5	25.0	171.7	31.0	39.8	0.854	0.213	62.5	314.5	303.0	277.8	-39.3	1.46
304	216.1	24.9	172.3	30.6	39.6	0.854	0.213	61.3	314.6	304.0	278.1	-38.7	1.46
305	215.7	24.8	172.8	30.2	39.3	0.854	0.212	60.2	314.7	305.0	278.4	-38.1	1.45