

XVI (#0335): Total of 265 orbits. $\lambda_o = 263.7^\circ$, $\lambda_g - \lambda_o = 291.4^\circ$, $\beta_g = -5.1^\circ$, $\Delta r = 3^\circ$, $\Delta \lambda_o = 10^\circ$. XVI may be divided into two showers, XVII0 around $\lambda_o = 256^\circ$ and XVII1 and XVII2 around $\lambda_o = 265^\circ$.

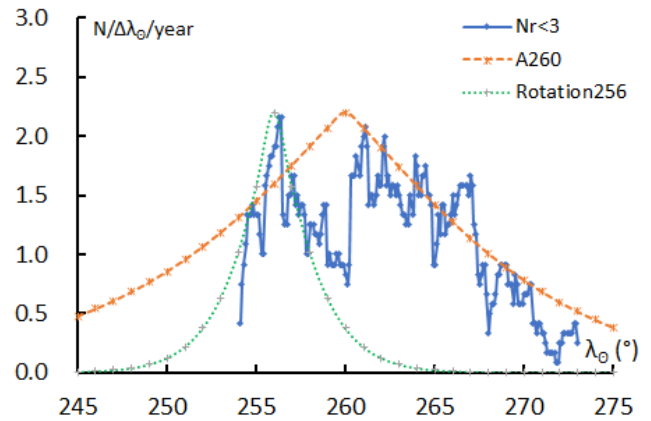
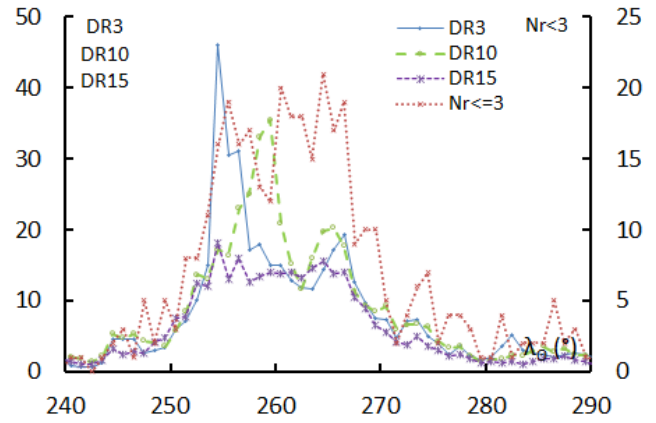
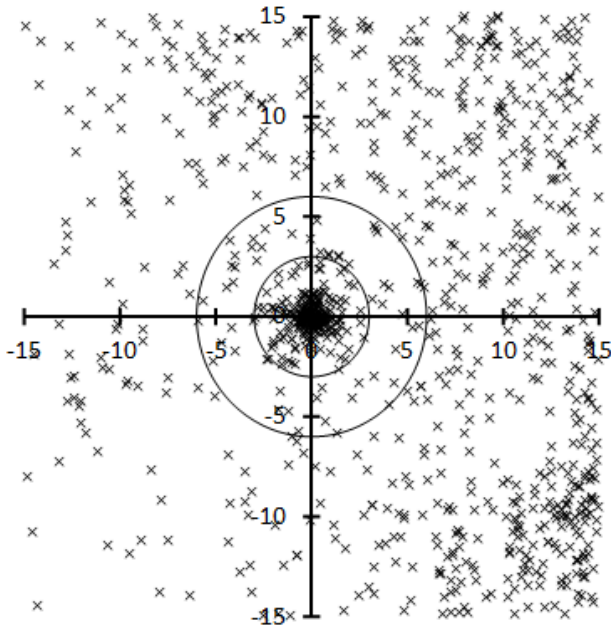


Table 1 – Number per year.

Year	N	Year	N
2007	18	2013	27
2008	25	2014	21
2009	25	2015	14
2010	17	2016	15
2011	30	2017	24
2012	26	2018	23

Table 2 – Activity profiles.

	λ_o	Max
$Nr <= 3$	264.5	21
DR3	254.5	46.0
DR10	259.5	35.4
DR15	254.5	18.1

Table 3 – Evolution of the orbital parameters during the activity period.

λ_o	$\lambda_g - \lambda_o$	β_g	α_g	δ_g	v_g	e	q	i	ω	Ω	λ_{π}	β_{π}	a
244	296.5	-3.7	179.0	-3.6	67.7	1.019	0.510	171.8	272.5	64.0	151.5	-8.2	-26.8
245	296.3	-3.8	179.6	-3.9	67.8	1.016	0.516	171.7	273.1	65.0	151.9	-8.3	-32.4
246	296.0	-3.8	180.3	-4.3	67.8	1.013	0.522	171.6	273.7	66.0	152.2	-8.4	-40.7
247	295.7	-3.9	181.0	-4.7	67.8	1.010	0.528	171.5	274.4	67.0	152.6	-8.5	-54.5
248	295.5	-4.0	181.6	-5.0	67.8	1.007	0.534	171.3	275.0	68.0	153.0	-8.6	-81.7
249	295.2	-4.1	182.3	-5.4	67.9	1.003	0.541	171.2	275.6	69.0	153.3	-8.7	-161
250	295.0	-4.1	182.9	-5.8	67.9	1.000	0.547	171.1	276.3	70.0	153.7	-8.8	-3311
251	294.7	-4.2	183.6	-6.1	67.9	0.997	0.553	171.0	276.9	71.0	154.0	-9.0	181.2
252	294.4	-4.3	184.2	-6.5	68.0	0.994	0.559	170.9	277.6	72.0	154.3	-9.1	88.98
253	294.2	-4.3	184.9	-6.8	68.0	0.990	0.565	170.7	278.2	73.0	154.7	-9.2	59.31
254	293.9	-4.4	185.5	-7.2	68.0	0.987	0.571	170.6	278.9	74.0	155.0	-9.3	44.68
255	293.7	-4.5	186.2	-7.6	68.0	0.984	0.578	170.5	279.5	75.0	155.3	-9.3	35.96
256	293.4	-4.6	186.8	-7.9	68.1	0.981	0.584	170.4	280.2	76.0	155.6	-9.4	30.19
257	293.1	-4.6	187.5	-8.3	68.1	0.977	0.590	170.3	280.9	77.0	156.0	-9.5	26.07
258	292.9	-4.7	188.1	-8.6	68.1	0.974	0.596	170.2	281.6	78.0	156.3	-9.6	23.00
259	292.6	-4.8	188.8	-9.0	68.2	0.971	0.603	170.1	282.2	79.0	156.6	-9.7	20.62
260	292.4	-4.9	189.4	-9.3	68.2	0.967	0.609	170.0	282.9	80.0	156.9	-9.8	18.72
261	292.1	-4.9	190.1	-9.7	68.2	0.964	0.615	169.9	283.6	81.0	157.2	-9.9	17.17
262	291.8	-5.0	190.8	-10.1	68.2	0.961	0.621	169.7	284.3	82.0	157.4	-9.9	15.89
263	291.6	-5.1	191.4	-10.4	68.3	0.958	0.628	169.6	285.0	83.0	157.7	-10.0	14.80
264	291.3	-5.1	192.1	-10.8	68.3	0.954	0.634	169.5	285.7	84.0	158.0	-10.1	13.87

Table 3 – Continued, evolution of the orbital parameters during the activity period.

λ_{θ}	$\lambda_g - \lambda_{\theta}$	β_g	α_g	δ_g	v_g	e	q	i	ω	Ω	λ_{Π}	β_{Π}	a
265	291.1	-5.2	192.8	-11.1	68.3	0.951	0.640	169.4	286.5	85.0	158.3	-10.1	13.08
266	290.8	-5.3	193.4	-11.5	68.3	0.948	0.647	169.3	287.2	86.0	158.5	-10.2	12.38
267	290.5	-5.4	194.1	-11.8	68.4	0.945	0.653	169.2	287.9	87.0	158.8	-10.3	11.77
268	290.3	-5.4	194.7	-12.2	68.4	0.941	0.659	169.1	288.6	88.0	159.0	-10.3	11.22
269	290.0	-5.5	195.4	-12.5	68.4	0.938	0.666	169.0	289.4	89.0	159.3	-10.4	10.74
270	289.8	-5.6	196.1	-12.9	68.5	0.935	0.672	168.9	290.1	90.0	159.5	-10.4	10.31
271	289.5	-5.6	196.7	-13.2	68.5	0.932	0.678	168.8	290.9	91.0	159.8	-10.5	9.92
272	289.2	-5.7	197.4	-13.6	68.5	0.929	0.685	168.7	291.6	92.0	160.0	-10.5	9.57
273	289.0	-5.8	198.1	-13.9	68.5	0.925	0.691	168.6	292.4	93.0	160.2	-10.5	9.26
274	288.7	-5.8	198.8	-14.3	68.6	0.922	0.697	168.5	293.2	94.0	160.4	-10.6	8.97
275	288.4	-5.9	199.4	-14.6	68.6	0.919	0.703	168.4	293.9	95.0	160.6	-10.6	8.71
276	288.2	-6.0	200.1	-14.9	68.6	0.916	0.710	168.3	294.7	96.0	160.8	-10.6	8.47
277	287.9	-6.1	200.8	-15.3	68.7	0.913	0.716	168.2	295.5	97.0	161.0	-10.6	8.25
278	287.7	-6.1	201.5	-15.6	68.7	0.910	0.722	168.1	296.3	98.0	161.2	-10.7	8.04
279	287.4	-6.2	202.2	-16.0	68.7	0.907	0.729	168.0	297.1	99.0	161.4	-10.7	7.86